

# QUICK REFERENCE GUIDE



Sienna

2020

# 2020

## SIENNA

This Quick Reference Guide is a summary of basic vehicle operations. It contains brief descriptions of fundamental operations so you can locate and use the vehicle's main equipment quickly and easily.

The Quick Reference Guide is not intended as a substitute for the Owner's Manual located in your vehicle's glove box. We strongly encourage you to review the Owner's Manual and supplementary manuals so you will have a better understanding of your vehicle's capabilities and limitations.

Your dealership and the entire staff of Toyota Motor North America, Inc. wish you many years of satisfied driving in your new Sienna.



### *A word about safe vehicle operations*

This Quick Reference Guide is not a full description of Sienna operations. Every Sienna owner should review the Owner's Manual that accompanies this vehicle.

Pay special attention to the boxed information highlighted in color throughout the Owner's Manual. Each box contains safe operating instructions to help you avoid injury or equipment malfunction.

All information in this Quick Reference Guide is current at the time of printing. Toyota reserves the right to make changes at any time without notice.

OVERVIEW

Engine maintenance	9
Fuel tank door release and cap	8
Hood release	8
Indicator symbols	4-5
Instrument cluster	4
Instrument panel	2-3
Instrument panel light control	9
Keyless (and remote) entry <sup>1</sup>	6-7
Smart Key system <sup>1,2</sup>	7

FEATURES & OPERATIONS

Air conditioning/heating	28
Audio	24
AUTO ACCESS SEAT	34-35
Auto lock/unlock <sup>2</sup>	10
Automatic transmission	11
Bird's Eye View Camera	
with Perimeter Scan Function	33
Blind Spot Monitor with Rear Cross	
Traffic Alert (BSM w/RCTA)	32
Bottle holders	14
Clock	27
Cup holders	15
Door locks	10
Doors-Power sliding	19
Driver Easy Speak	22
Garage door opener (HomeLink®) <sup>2,3</sup>	22
Hill-start Assist Control (HAC)	31
Intuitive parking assist	30
Lights <sup>1</sup> & turn signals	12-13
Moonroof	21
Multi-Information Display (MID)	14
Parking brake	10
Power back door	20
Power outlets-12V DC	26
Power outlets-120V AC	26
Rear seat entertainment system	27
Rear view monitor system	32
Seat adjustments-Front	16
Seat adjustments-Rear	16
Seat heaters	29
Seats-Head restraints	19

FEATURES & OPERATIONS (continued)

Seats-Removing 2nd row center seat	17
Seats-Removing 2nd row outside seats	17
Seats-Stowing 3rd row seats	18
Steering lock release	11
Steering wheel switches	
& telephone controls (Bluetooth®)	23
Steering wheel-Heater	29
Sunshade-Side	22
Tilt & telescopic steering wheel	10
USB charging-ports	25
USB media/AUX port	25
VSC/TRAC OFF button	31
Windows-Power	20
Windows-Quarter	21
Windshield wipers & washers	13

TOYOTA SAFETY SENSE™ P (TSS-P)

Automatic High Beams (AHB)	46
Dynamic Radar	
Cruise Control (DRCC)	43-45
Lane Departure Alert with	
Steering Assist (LDA w/SA)	39-42
Pre-Collision System with Pedestrian	
Detection (PCS w/PD)	37-39
Quick overview-	
Toyota Safety Sense™ P (TSS-P)	36
Sensors	36

SAFETY & EMERGENCY FEATURES

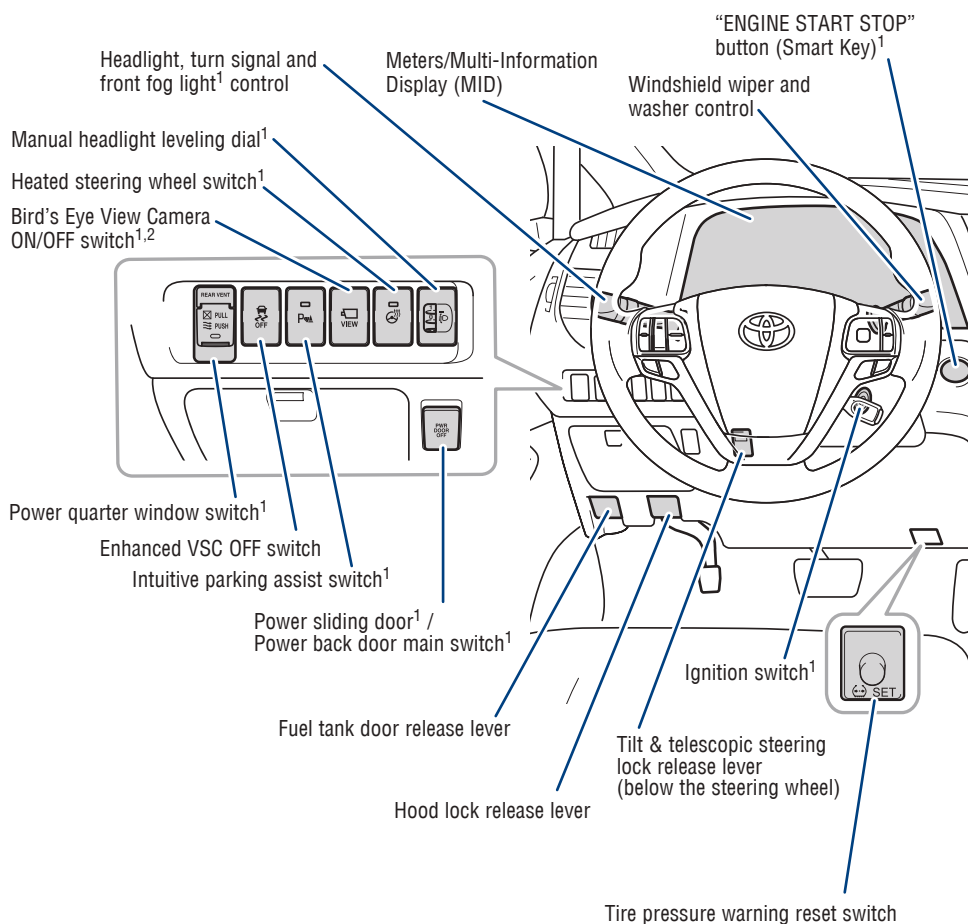
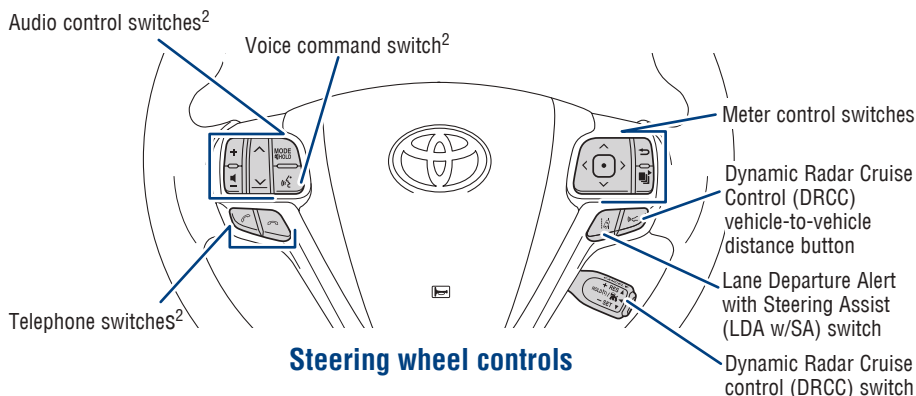
Child restraint anchors	47
Floor mat installation	52
Rear door child safety locks	47
Safety Connect	50
Seat belts	48
Seat belts-Shoulder belt anchor	47
Spare tire & tools	49
Star Safety System™	51-52
Tire Pressure Monitoring	
(warning) System (TPMS)	48

BLUETOOTH® DEVICE  
PAIRING SECTION

54-56

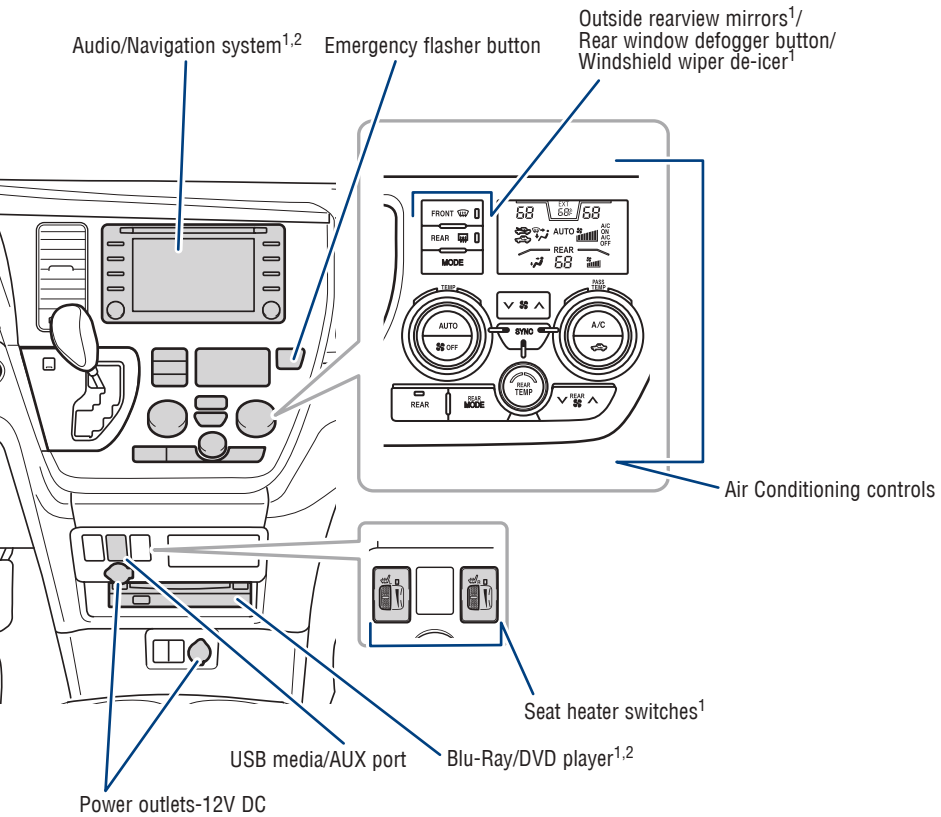
<sup>1</sup> Visit your Toyota dealer for information on customizing this feature.  
<sup>2</sup> Programmable by customer. Refer to the Owner's Manual for instructions and more information.  
<sup>3</sup> HomeLink® is a registered trademark of Gentex Corporation.

## Instrument panel

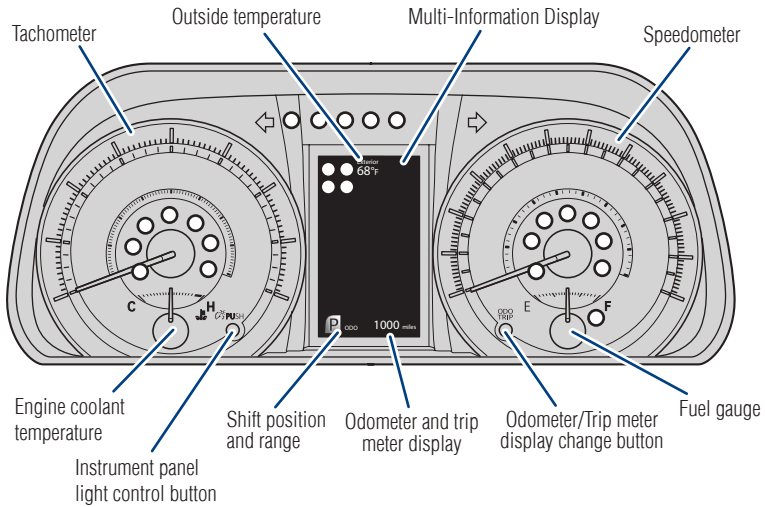


<sup>1</sup> If equipped

<sup>2</sup> For details, refer to the “Navigation and Multimedia System Owner’s Manual” or visit [www.toyota.com/audiomultimedia](http://www.toyota.com/audiomultimedia) for additional resources.



# Instrument cluster



○ Service indicators and reminders

# Indicator symbols

For details, refer to “Indicators and warning lights,” Section 2, 2020 Owner’s Manual.



Airbag SRS warning<sup>1</sup>



AIR BAG ON/OFF indicator<sup>1</sup>



Anti-lock Brake System (ABS) warning<sup>1</sup>



Arrow direction indicates fuel tank door position



Automatic High Beam (AHB) indicator



Blind Spot Monitor (BSM) indicator<sup>4</sup>



BSM outside rearview mirror indicators<sup>4</sup>



BSM w/Rear Cross Traffic Alert (RCTA) Indicator<sup>4</sup>



Brake Override System warning



Brake system warning<sup>1</sup>



Charging system warning



Constant speed cruise control indicator/Constant speed cruise control SET indicator




Driver and/or front passenger seat belt reminder (alarm will sound if speed is over 12 mph)



Dynamic Radar Cruise Control (DRCC) indicator/DRCC SET indicator

 ECO Driving Indicator Light<sup>1</sup>

 ECT PWR indicator

 Electric power steering system warning<sup>1</sup>

 Fog light indicator<sup>4</sup>

 Headlight low/high beam indicator

 High coolant temperature warning

 Lane Departure Alert (LDA) indicator [white/green/amber<sup>3</sup>]

 Low engine oil level warning

 Low engine oil pressure warning

 Low fuel level warning light

 Low outside temperature indicator

 Low Tire Pressure Warning<sup>1</sup>

 Low windshield washer fluid level warning


 Master warning light<sup>1,2</sup>


 Malfunction/Check Engine indicator<sup>1</sup>

 Pre-Collision System (PCS) warning<sup>1,2</sup>

 Security indicator

 Slip indicator/Hill-start Assist Control indicator<sup>1,3</sup>

 Third seat fold incomplete warning<sup>4</sup>

 Turn signal indicator

 Vehicle Stability Control (VSC) OFF indicator<sup>1</sup>

<sup>1</sup> If the indicator does not turn off within a few seconds of starting the engine, there may be a malfunction. Have the vehicle inspected by your Toyota dealer.

<sup>2</sup> If the indicator flashes, there may be a malfunction. Refer to the Owner's Manual.

<sup>3</sup> If the indicator flashes, it indicates that the system is operating.

<sup>4</sup> If equipped.

# OVERVIEW

## Keyless (and remote) entry

### UNLOCKING OPERATION

Type A



Type B



Type C



Push  
ONCE: Driver door  
TWICE: All doors

Carry Type C  
Smart Key remote

Front door unlock\*

Grasp



### LOCKING OPERATION

Type A



Type B



Type C

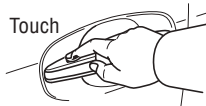


Push

Carry Type C  
Smart Key remote

All-door lock

Touch



**NOTE:** If a door is not opened within 60 seconds of unlocking, all doors will relock for safety.

### POWER SLIDING DOOR OPERATION (IF EQUIPPED)

Type B



Left

Right



Push and hold

Type C



Left

Right

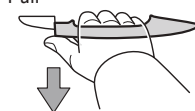


Push and hold

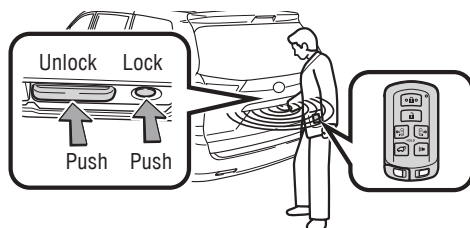
Carry Type C  
Smart Key remote

All-door unlock

Pull



### BACK DOOR LOCK/UNLOCK



Carry Type C  
Smart Key remote

All-door unlock  
and lock

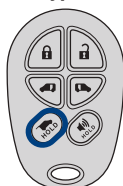
\* Driver door unlocking function can be programmed to unlock driver side doors only, or all doors. Grasping any passenger door handle will unlock all doors. Please refer to the Owner's Manual for more details on how to program the doors.

**NOTE:** Doors may also be locked/unlocked using remote.



## POWER BACK DOOR OPERATION (IF EQUIPPED)

Type B



Push and hold

Type C



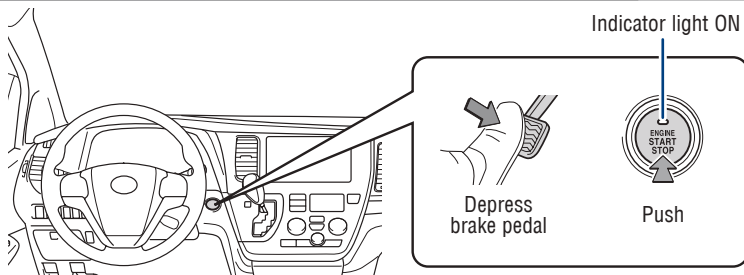
Push and hold

## PANIC BUTTON



## Smart Key system (if equipped)

## START FUNCTION



**NOTE:** The Smart Key must be carried to enable the start function. With gear shift lever in Park and the brake pedal depressed, push the “ENGINE START STOP” switch.

## POWER (WITHOUT STARTING ENGINE)

Without depressing the brake pedal, pressing the “ENGINE START STOP” switch will change the operation mode in succession from:

## ACCESSORY

Accessory – Some electrical components can be used.

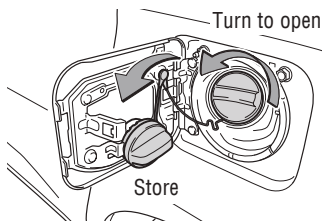
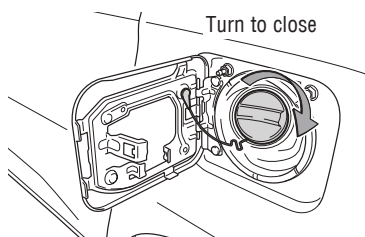
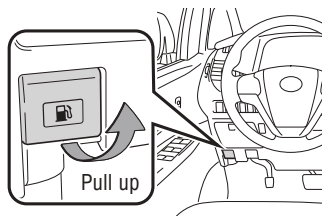
## ON


On - All electrical components can be used.

## OFF

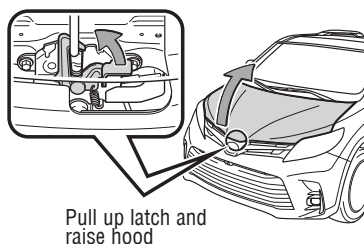
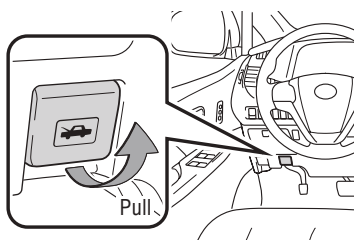
Off - All systems OFF. Emergency flashers can be used.

## Fuel tank door release and cap

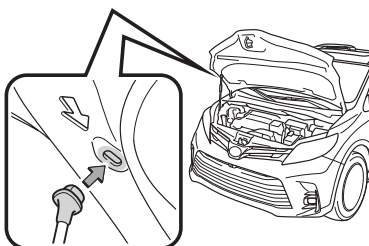


**NOTE:** Tighten until one click is heard. If the cap is not tightened enough, Check Engine “” indicator may illuminate.

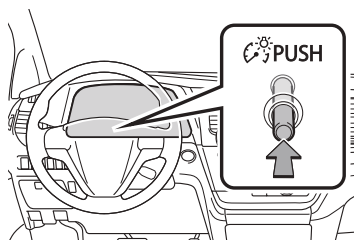
## Hood release



Insert rod to hold hood open

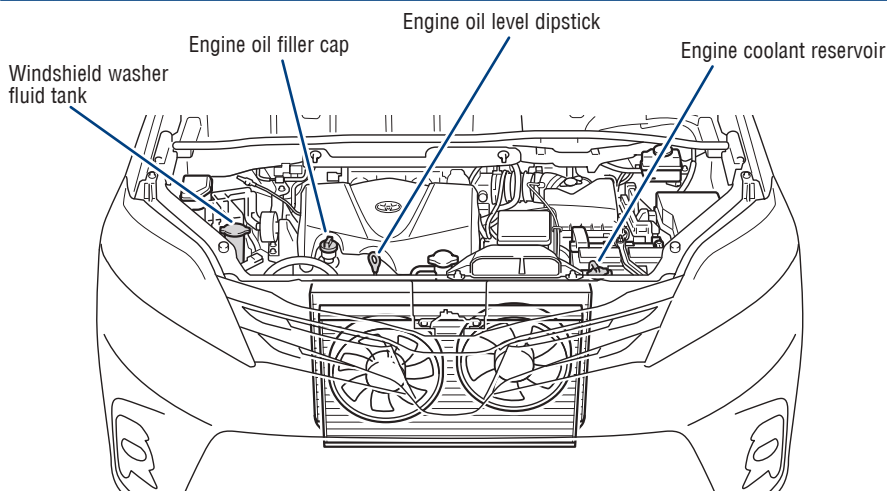


## Instrument panel light control



Pressing the button will adjust the brightness of the meter panel lights. The brightness level of the meters when the surroundings are bright (day mode) and dark (night mode) can be adjusted individually.

## Engine maintenance



**NOTE:** Regularly scheduled maintenance, including oil changes, will help extend the life of your vehicle and maintain performance. Please refer to the "Warranty & Maintenance Guide."

## FEATURES & OPERATIONS

### **Auto lock/unlock**

Automatic door locks can be programmed to operate in different modes, or turned OFF.

#### **Shift position linked door locking/unlocking function**

- Doors lock when shifting from Park.
- Doors unlock when shifting into Park.

#### **Speed linked door locking function**

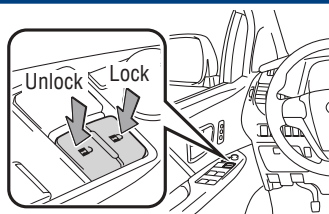
- Doors lock when the vehicle speed is approximately 12 mph or higher.

#### **Driver's door linked door unlocking function**

- (Without a Smart Key) Doors unlock when the driver's door is opened within 45 seconds after turning the ignition switch to the "ACC" or "LOCK" position.
- (With a Smart Key) Doors unlock when the driver's door is opened within 45 seconds after turning the "ENGINE START STOP" switch OFF.

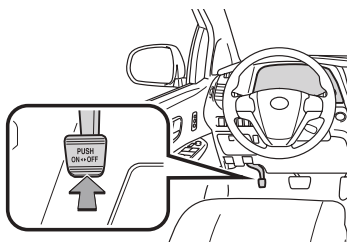
*Refer to the Owner's Manual for more details.*

### **Door locks**



### **Parking brake**

**BRAKE**



Set: Depress  
Release: Depress again

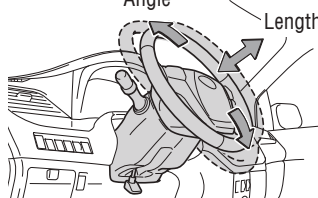
### **Tilt and telescopic steering wheel**

Lock release lever



Angle

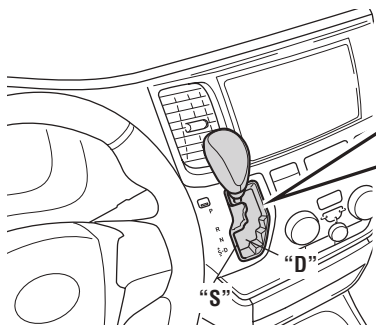
Length



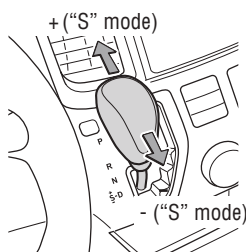
Hold wheel, push lever down, set angle and length, and return lever.

**NOTE: Do not attempt to adjust while the vehicle is in motion.**

## Automatic transmission



- |          |          |
|----------|----------|
| <b>P</b> | Park*    |
| <b>R</b> | Reverse  |
| <b>N</b> | Neutral  |
| <b>D</b> | Drive    |
| <b>S</b> | "S" mode |



\* The "ENGINE START STOP" switch/ignition switch must be "ON" and the brake pedal depressed to shift from Park.

### "S" (SEQUENTIAL) MODE

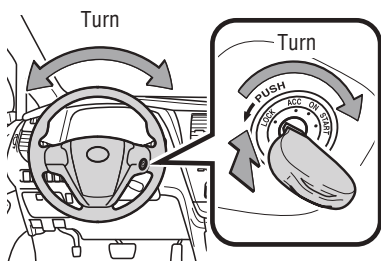
Shift the shift lever to "S" position from "D" position.

- + : Upshift (push and release)
- : Downshift (pull and release)

Downshifting increases power going uphill, or provides engine braking downhill. For best fuel economy during normal driving conditions, always drive with the shift lever in the "D" position.

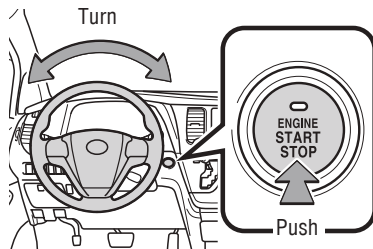
## Steering lock release

### Without Smart Key system



When starting the engine, the engine switch may seem stuck in the "LOCK" position. To free it, turn the key while turning the steering wheel slightly left and right.

### With Smart Key system

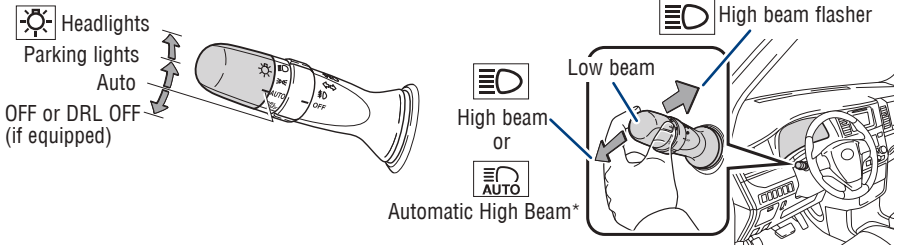


The green indicator light on the engine switch will flash and a message will be shown on the multi-information display. Press the engine switch while turning the steering wheel left and right.

# FEATURES & OPERATIONS

## Lights & turn signals

### HEADLIGHTS



**Daytime Running Light (DRL) system (if equipped)** Automatically turns on under certain conditions to make vehicle more visible to other drivers. Not for use at night.

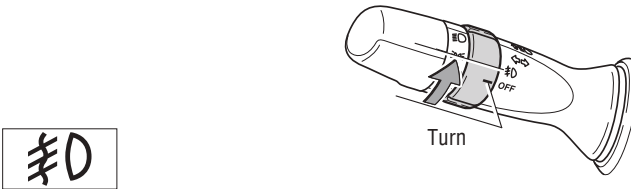
**Automatic light cut off system** Automatically turns lights off after a delay of 30 seconds, or lock switch on remote is pushed after locking.

**Automatic High Beam (AHB) system** Automatically switches between high and low beams as appropriate for enhance forward visibility.

*Refer to Toyota Safety Sense™ P (TSS-P) in this guide or the Owner's Manual for more details on the Automatic High Beam feature.*

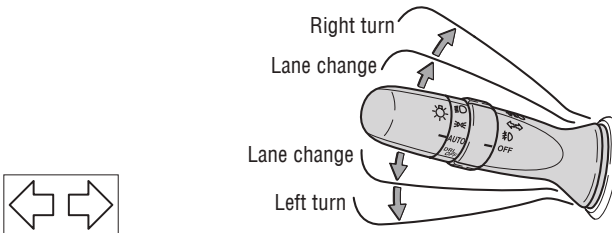
\* Operating conditions must be met. Refer to the Owner's Manual for details.

### FRONT FOG LIGHTS (IF EQUIPPED)

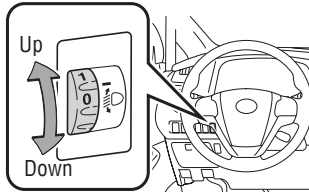


Front fog lights come on only when the headlights are on low beam.

### TURN SIGNALS



## HEADLIGHT BEAM LEVEL CONTROL (IF EQUIPPED)

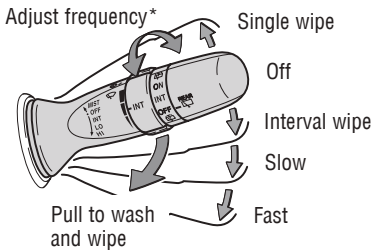


Rotating the dial downward will lower the angle of the beam.

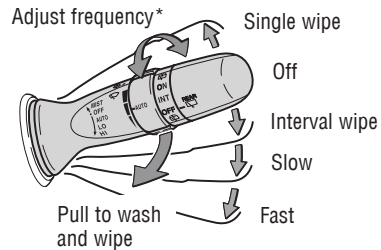
## Windshield wipers & washers

### FRONT

#### Intermittent



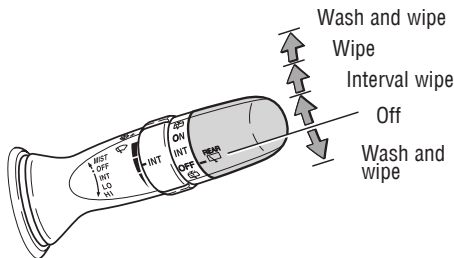
#### Rain-sensing (if equipped)



**\*Intermittent windshield wiper frequency adjustment** Rotate to increase/decrease wipe frequency.

**\* Rain-sensing windshield wiper** Rotate to increase/decrease sensor sensitivity.

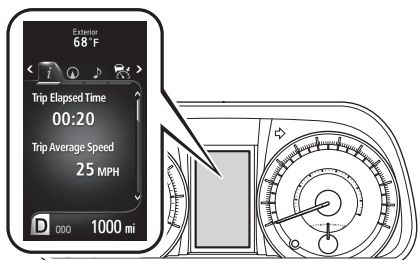
### REAR



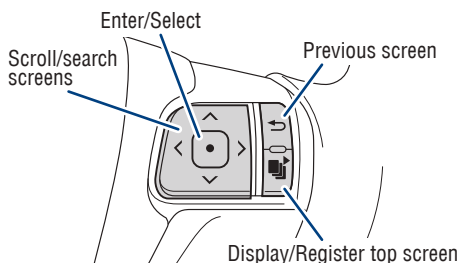
## FEATURES & OPERATIONS

### Multi-Information Display (MID)

#### Display



#### Meter control switches



Push MID control switches to view or change information in the following:



Driving information



Navigation system-linked display (if equipped)



Audio system-linked display



Dynamic radar cruise control display



Warning display

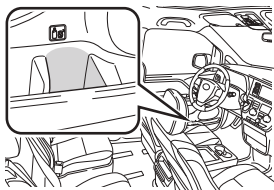


Settings display

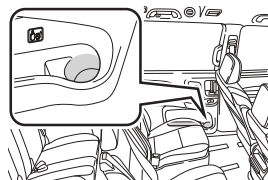
*Refer to the Owner's Manual for more settings and customizable features.*

### Bottle holders

#### FRONT DOORS



#### SLIDING DOORS

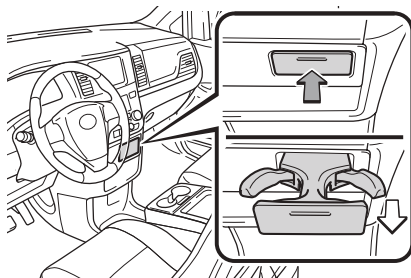


**NOTE:** Do not place open containers in the bottle holders.



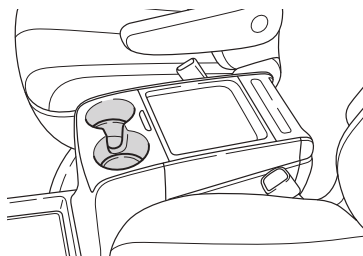
# Cup holders

## INSTRUMENT PANEL



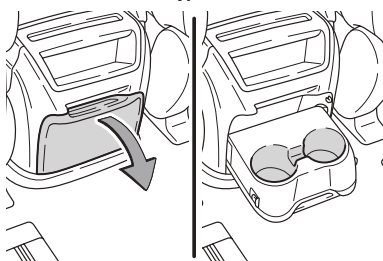
## CONSOLE BOX (IF EQUIPPED)

### Front

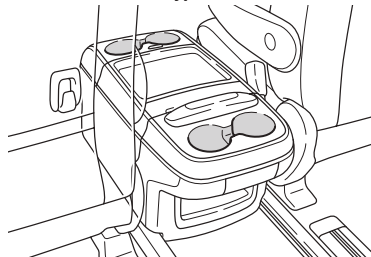


### Rear

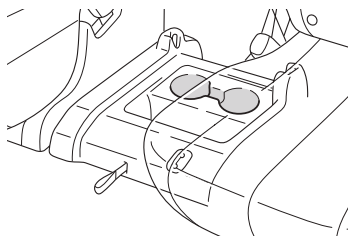
#### Type A



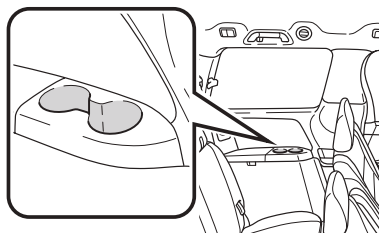
#### Type B



## 2ND CENTER SEAT (IF EQUIPPED)



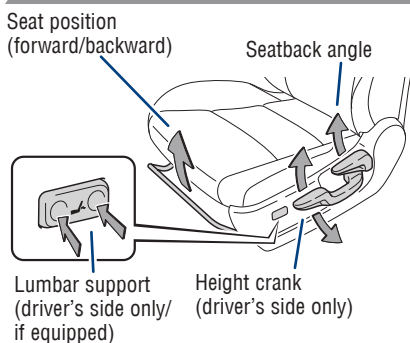
## 3RD ROW AREA



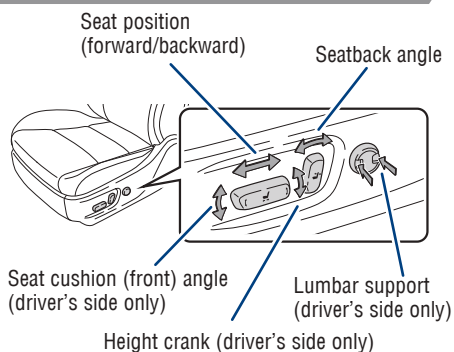
## FEATURES & OPERATIONS

### Seat adjustments-Front

#### MANUAL SEAT



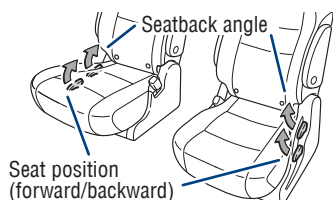
#### POWER SEAT



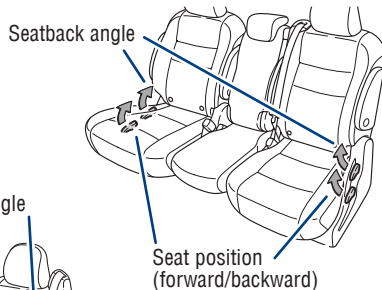
### Seat adjustments-Rear

#### SECOND ROW SEAT

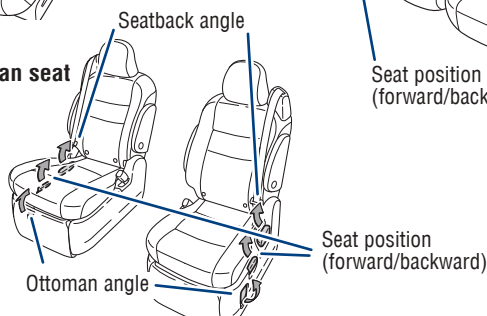
##### Tip-up seat (7-passenger models)



##### Tip-up seat (8-passenger models)

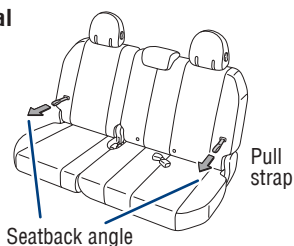


##### Ottoman seat

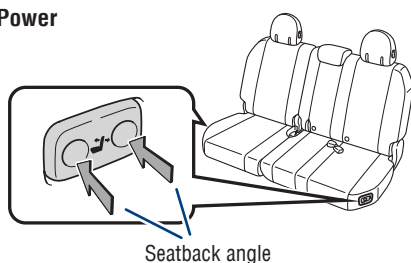


#### THIRD ROW SEAT

##### Manual



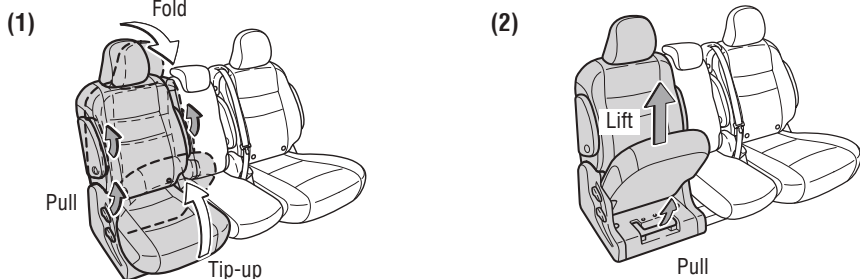
##### Power



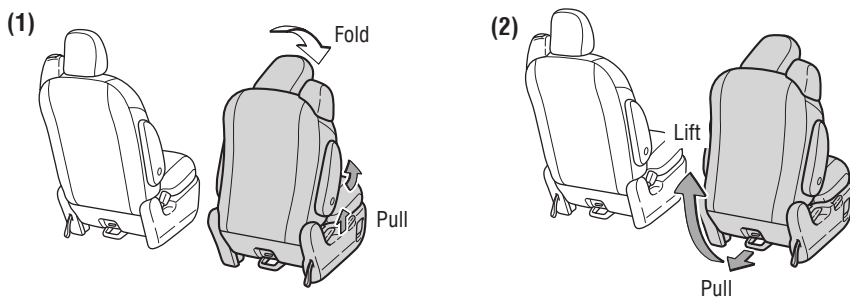
Refer to the Owner's Manual for more details.

## Seats-Removing 2nd row outside seats

### Tip-up seats

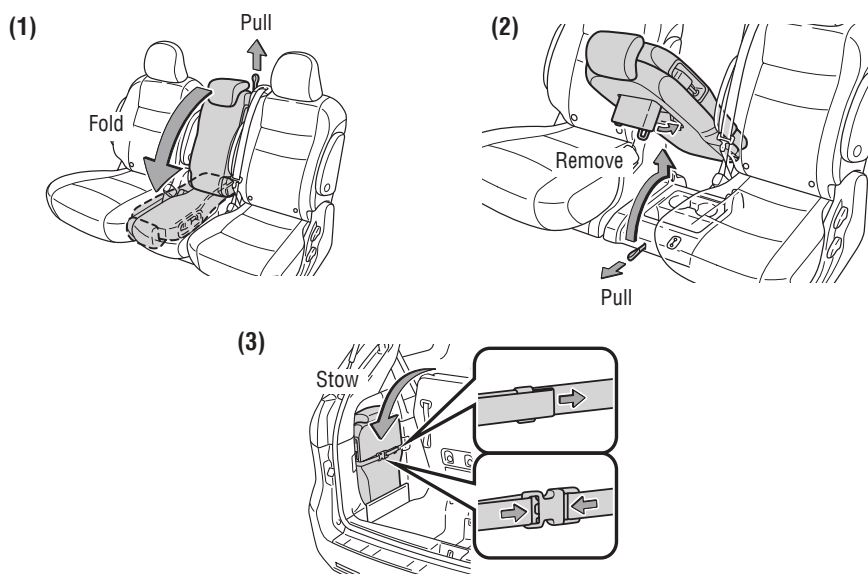


### Ottoman seats



Refer to the Owner's Manual for more details.

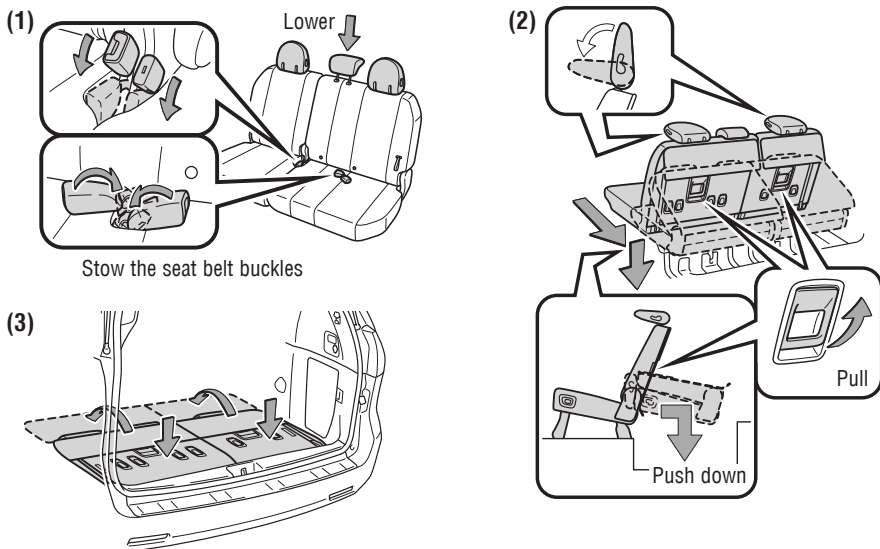
## Seats-Removing 2nd row center seat (if equipped)



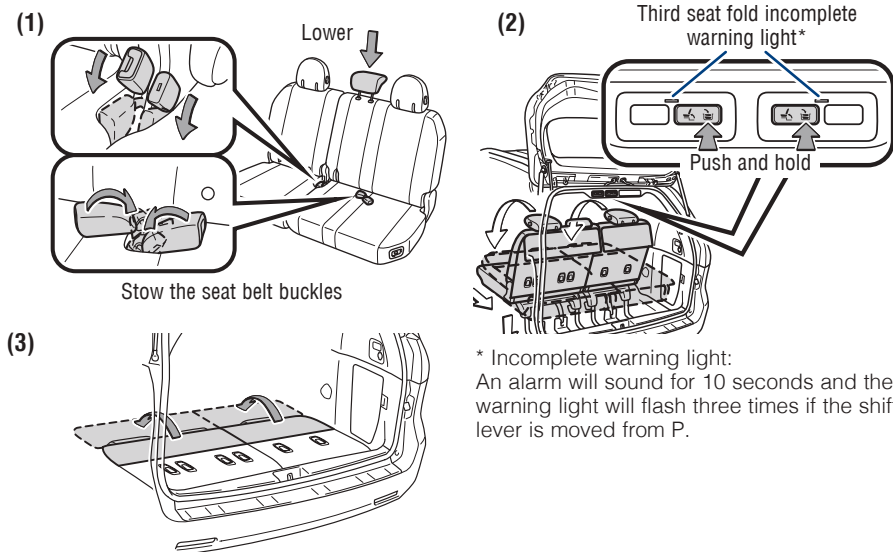
Refer to the Owner's Manual for more details.

## Seats-Stowing 3rd row seats

### MANUAL



### POWER



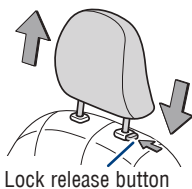
\* Incomplete warning light:  
An alarm will sound for 10 seconds and the warning light will flash three times if the shift lever is moved from P.

**3RD SEAT** ("3RD SEAT") warning indicator will light up on the instrument panel if the third seat is not fully open or stowed.

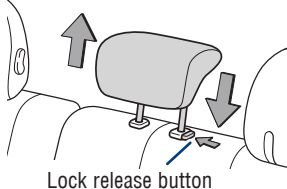
Refer to the Owner's Manual for more details.

## Seats-Head restraints

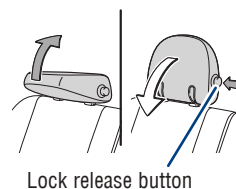
Front and second row outside seats



Second row center (8-passenger models) and third row center seats



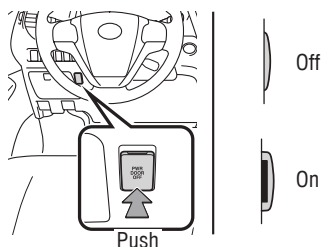
Third row outside seats



## Doors-Power sliding (if equipped)

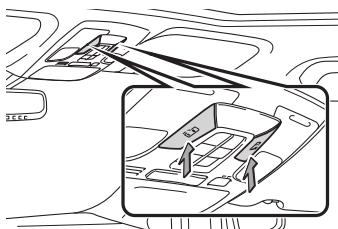
### ON/OFF SWITCH

Instrument panel

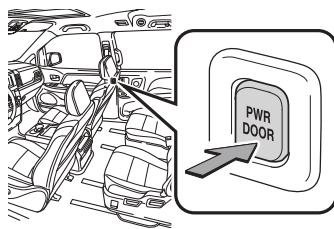


### OPENING/CLOSING

Front overhead console



Center pillar



Press and hold the switch to open and close each sliding door.

### Power

- Sliding doors will not fully open if the sliding door window is open.
- Power sliding doors will open only when gear selector is in the "P" (Park) position, and doors are unlocked. *Refer to the Owner's Manual for more details.*
- An alarm will sound if a sliding door is open and the vehicle is shifted out of Park.
- Left sliding door will not open if gas door is open.
- If battery is disconnected, the power sliding doors need to be reinitialized.

*Refer to the Owner's Manual for more details.*

### Manual

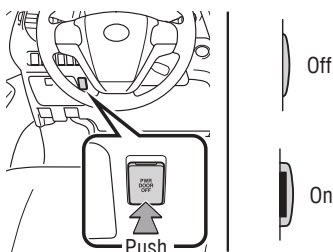
- Sliding doors will not lock into the open position if the sliding door window is open.

## FEATURES & OPERATIONS

### Power back door (if equipped)

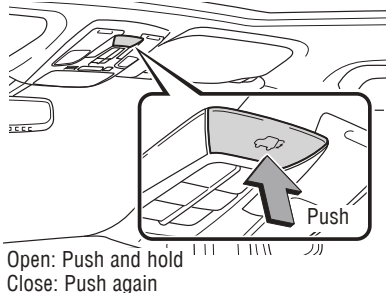
#### ON/OFF SWITCH

##### Instrument panel

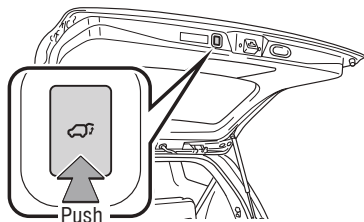


#### OPENING/CLOSING

##### Front overhead console

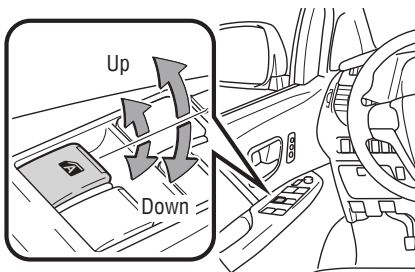


#### CLOSING

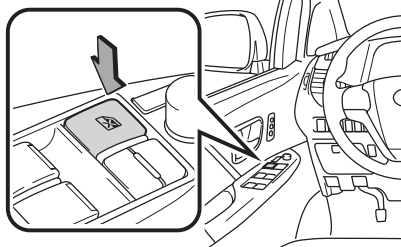


**NOTE:** If battery is disconnected, the power back door needs to be reinitialized. Refer to the Owner's Manual for more details.

### Windows-Power



#### Window lock switch

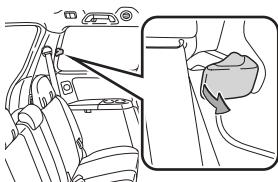


**All window auto up/down** Push the switch completely down or pull it completely up and release to fully open or close. To stop window partway, lightly push the switch in the opposite direction.

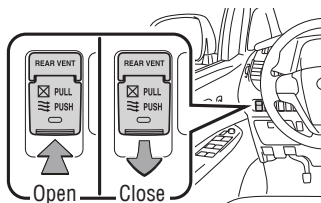
**Window lock switch** Deactivates all passenger windows. Driver's window remains operable.

## Windows-Quarter

### Manual



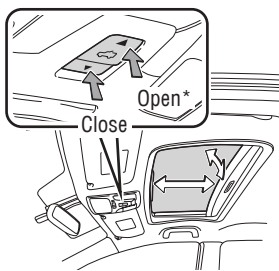
### Power



## Moonroof (if equipped)

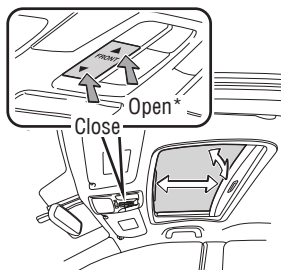
### FRONT MOONROOF

#### Without a rear moonroof



\* Tilt: Push  
Open: Push again

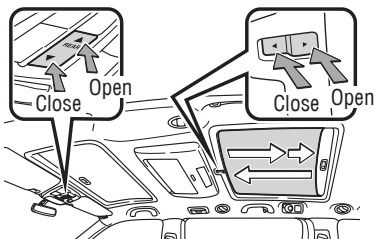
#### With a rear moonroof



\* Tilt: Push  
Open: Push again

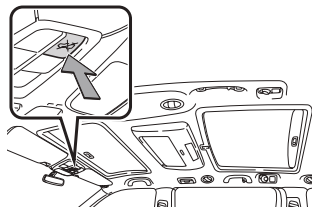
Lightly press either side of the moonroof switch while opening/closing is in progress, the moonroof stops partway.

### REAR MOONROOF (IF EQUIPPED)



Push once to open partway;  
again to open completely.

#### Disable the rear moonroof

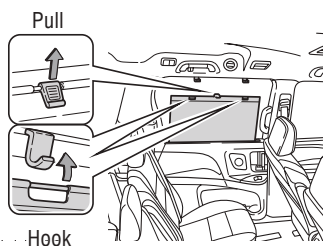


Lightly press either side of the moonroof switch while opening/closing is in progress, the moonroof stops partway.

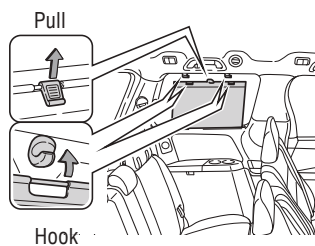
## FEATURES & OPERATIONS

### **Sunshade-Side (if equipped)**

#### **Rear door window**



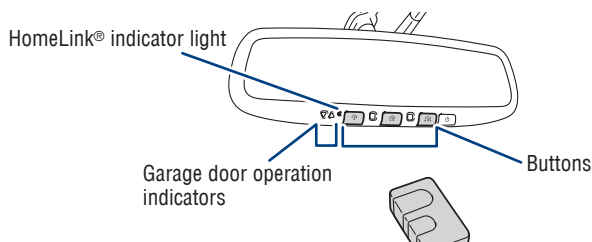
#### **Rear quarter window**



### **Driver Easy Speak (if equipped)**

This feature utilizes the vehicle's built-in microphone to amplify the driver's voice through the rear speakers. To activate this feature, select "Driver Easy Speak" from the Apps screen on the audio unit. The feature must be turned on every time you enter the vehicle, and automatically turns off when any door (including the liftgate) is opened. There are 7 volume settings.

### **Garage door opener (HomeLink®)\* (if equipped)**



Garage door openers manufactured under license from HomeLink®\* can be programmed to operate garage doors, estate gates, security lighting, etc.

Refer to "Garage door opener," Section 5-4 in the Owner's Manual, for more details.

For programming assistance, contact HomeLink® at 1-800-355-3515, or visit <http://www.homelink.com/toyota>.

\* HomeLink® is a registered trademark of Gentex Corporation.



# Steering wheel switches & telephone controls (Bluetooth®)

## Steering wheel telephone switches

“ ^ v ”

Use to search within the selected audio medium (radio, CD, etc.).

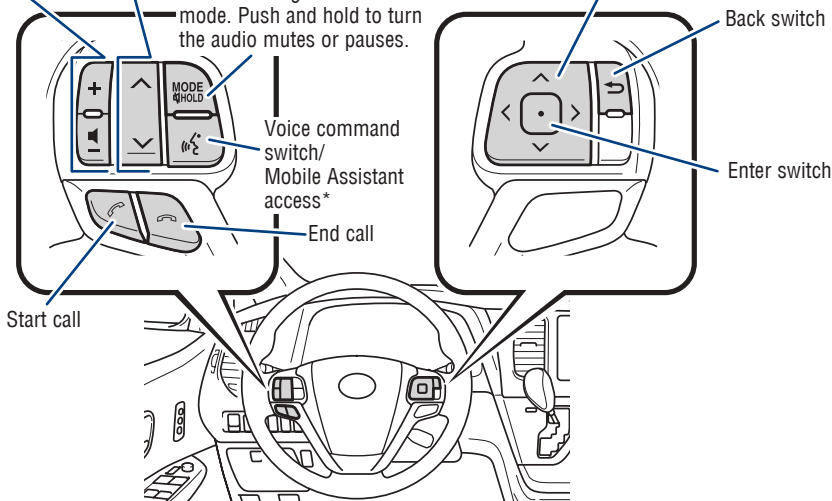
Volume control

“MODE/HOLD”

Push to change an audio mode. Push and hold to turn the audio mutes or pauses.

“ ◀ ▶ ”

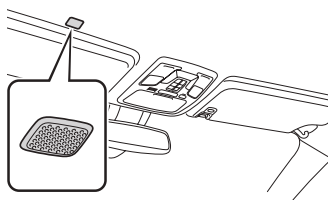
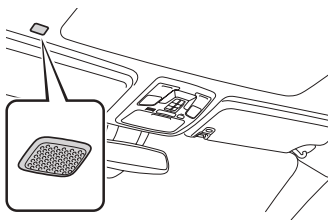
Select an item/Change pages



## Microphone

Type A (with moonroof)

Type B (without moonroof)



Bluetooth® technology allows dialing or receipt of calls without removing your hands from the steering wheel.

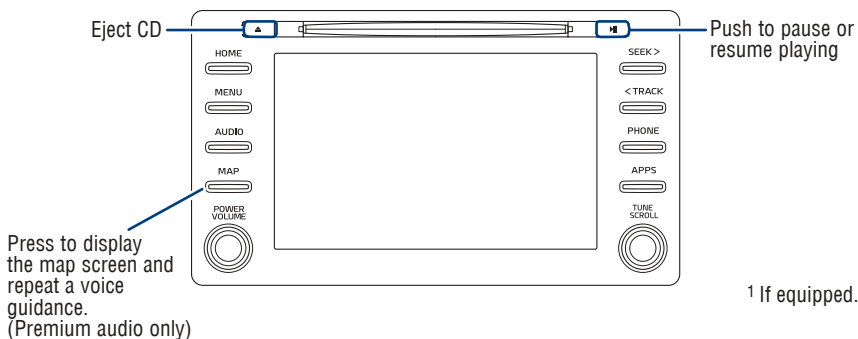
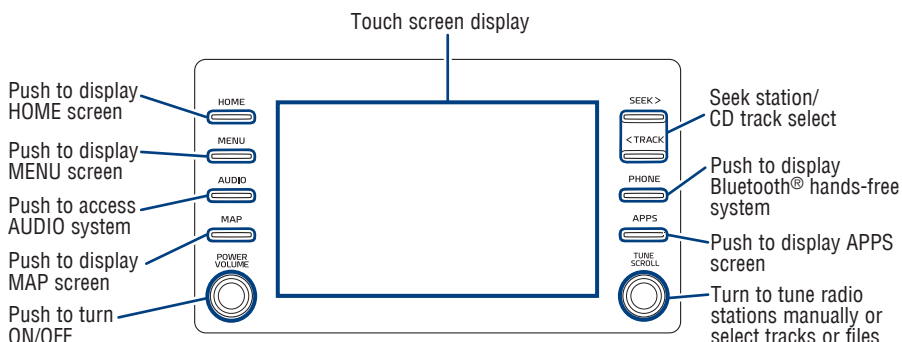
\* Push and hold to access Mobile Assistant. When a compatible smartphone is Bluetooth® connected push and hold the Voice Command switch 2-3 seconds to access Siri® Eyes Free.

Refer to the “Bluetooth® Device Pairing Section” in this guide for more information about phone connections and compatibility.

Refer to the “Navigation and Multimedia System Owner’s Manual” for more details.

**NOTE: Concentrating on the road should always be your first priority while driving. Do not use the Audio Multimedia system if it will distract you.**

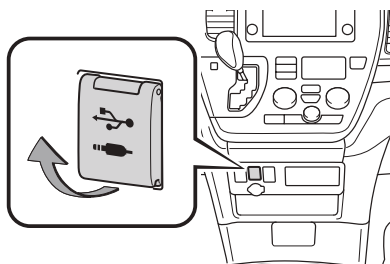
## Audio



Refer to the "Navigation and Multimedia System Owner's Manual" or visit [www.toyota.com/audiomultimedia](http://www.toyota.com/audiomultimedia) for additional resources.

**NOTE:** Concentrating on the road should always be your first priority while driving. Do not use the Audio Multimedia system if it will distract you.

## USB media/AUX port



### USB media port

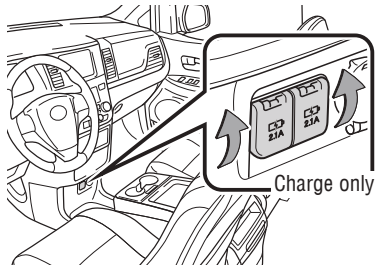
By connecting a USB-compatible portable audio device or USB memory stick into the USB media port, you can listen to music through the vehicle's speaker system.

### AUX port

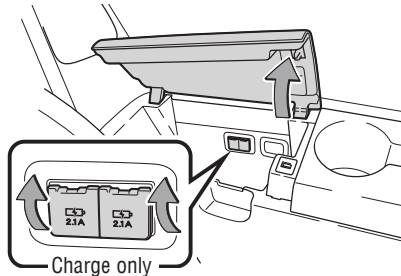
By inserting an AUX cable into the AUX port, you can listen to music from a portable audio device through the vehicle's speaker system while in AUX mode.

## USB charging-ports

### Center panel (if equipped)

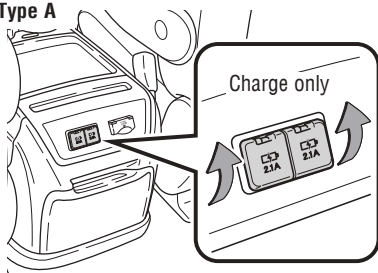


### Auxiliary box (third seat lefthand side)

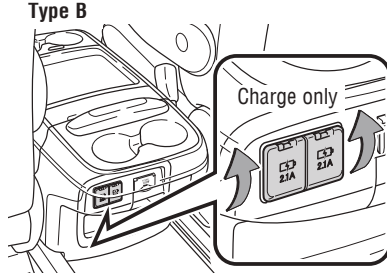


### Console box (if equipped)

#### Type A



#### Type B

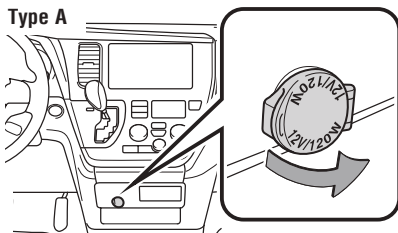


The ignition/"ENGINE START STOP" switch must be in "ACC" or "ON"/ACCESSORY or IGNITION ON position for use.

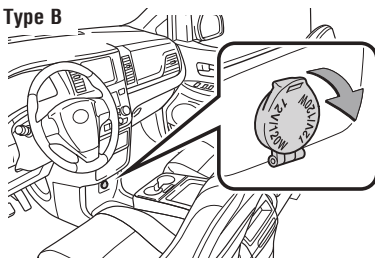
## Power outlets-12V DC

### Instrument panel

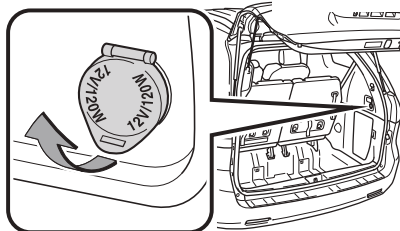
Type A



Type B



### Luggage compartment

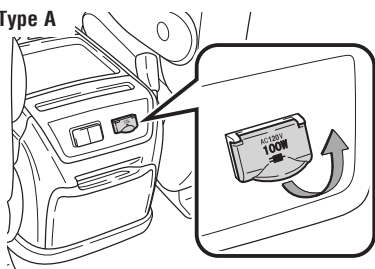


The ignition/"ENGINE START STOP" switch must be in "ACC" or "ON"/ACCESSORY or IGNITION ON position for use.

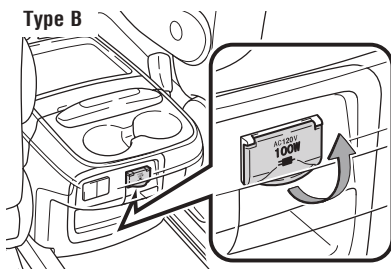
## Power outlets-120V AC (if equipped)

### Console box

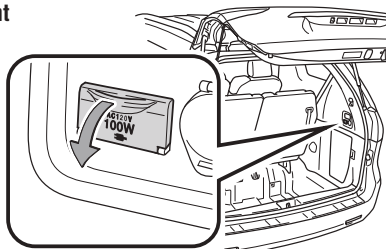
Type A



Type B

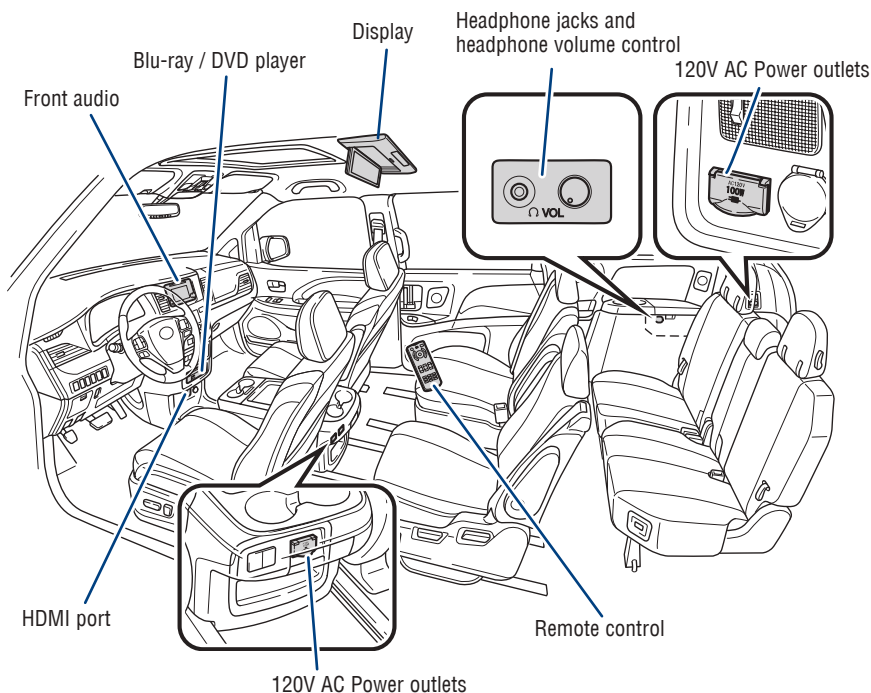


### Luggage compartment



The ignition/"ENGINE START STOP" switch must be in "ON"/IGNITION ON position for use.

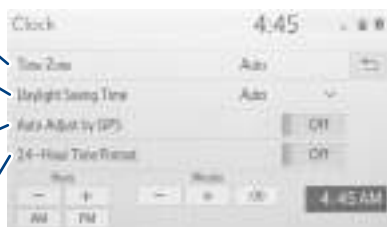
## Rear seat entertainment system (if equipped)



Refer to Section 3-7 of the "Navigation and Multimedia System Owner's Manual" for more information.

## Clock

- Select to change time zone
- Select to daylight savings time ON/OFF/AUTO.<sup>1</sup>
- Select to set to automatic GPS adjustment of clock.<sup>2</sup>
- Select to set hour display to 12 or 24 hour time.



- 1) Push "**MENU**" button next to the screen.
- 2) Select "**Setup**" or "**General**" in the touch screen to access the general settings screen.
- 3) Select "**Clock**."
- 4) Then select desired items to be reset.

Refer to the "Navigation and Multimedia System Owner's Manual" for more details.

<sup>1</sup> Premium Audio only

<sup>2</sup> Audio Plus and Premium Audio only

# Air conditioning/heating

## FRONT AIR CONDITIONING

### Control panel

#### Airflow vent

In “” mode, use outside air (“” indicator “OFF”) to reduce window fogging. “” mode uses outside air only.



Temperature selector (driver side)

#### Automatic climate control ON

Adjusting the temperature setting will cause the airflow vents, air intake and fan to adjust automatically to set temperature.

Fan ON/OFF

Rear button

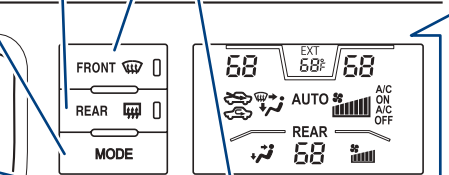
Outside rearview mirror\*/  
Rear window defogger and windshield wiper de-icer\*

\* If equipped

Windshield defogger

Front fan speed

Display



Temperature selector (front passenger side)

Air Conditioning ON/OFF

Recirculated cabin air (outside air when OFF)

Rear fan speed

Synchronizes driver, front passenger and rear temperature settings

Rear airflow vent

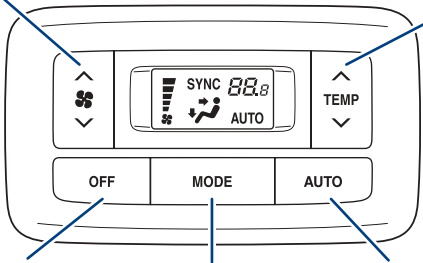
Temperature selector (rear)



## REAR AUTOMATIC AIR CONDITIONING

Fan speed

Temperature selector



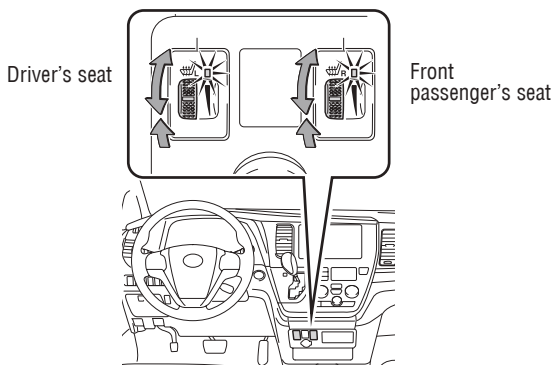
Climate control OFF

Airflow vent

Automatic climate control ON

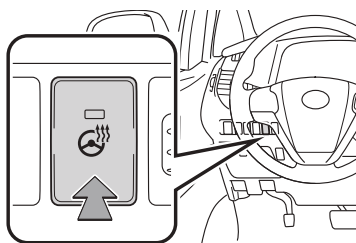


## Seat heaters (if equipped)

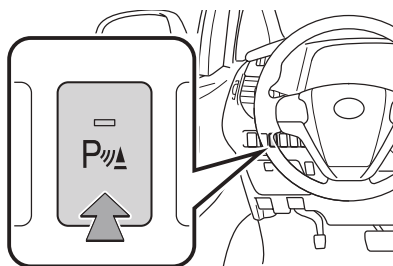


The ignition/"ENGINE START STOP" switch must be in "ON"/IGNITION ON position for use.

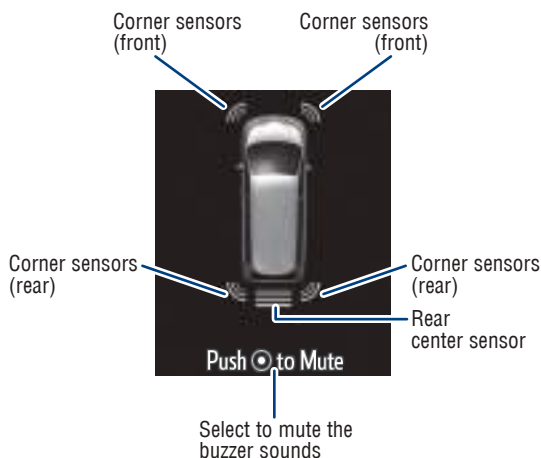
## Steering wheel-heater (if equipped)



The ignition/"ENGINE START STOP" switch must be in "ACC" or "ON"/ACCESSORY or IGNITION ON position for use.



### **Multi-Information Display (MID)**



The parking assist sonar system operates when the vehicle approaches an obstacle. The distance from your vehicle to nearby obstacles when parallel parking or maneuvering into a garage is measured by sensors and communicated via the Multi-Information Display (MID), the navigation system screen and audible beeps.

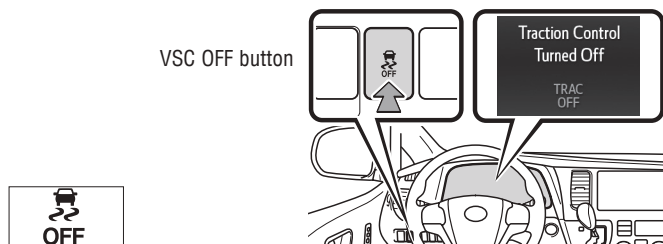
When the sensor detects an obstacle, the direction of and the approximate distance to the obstacle are displayed on the MID display or the navigation system screen by illuminating continuously (far) or blinking (near), and beeping sounds will switch from intermittent to continuous as you approach and get closer to a detected obstacle. When the sensors detect two or more obstacles, the audible alerts will respond to the nearest zone.

Always check the surrounding area when using this system.

*Refer to section Intuitive parking assist in the Navigation and Multimedia System Owner's Manual for more details.*



## VSC/TRAC OFF switch

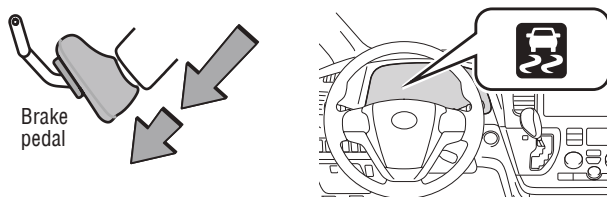


The VSC OFF switch can be used to help free a stuck vehicle in surroundings like mud, dirt or snow. While the vehicle is stopped, press switch to disable the TRAC system.

To disable both VSC and TRAC systems, press and hold the switch for at least 3 seconds.

*Refer to the Owner's Manual for limitations and more information.*

## Hill-start Assist Control (HAC)

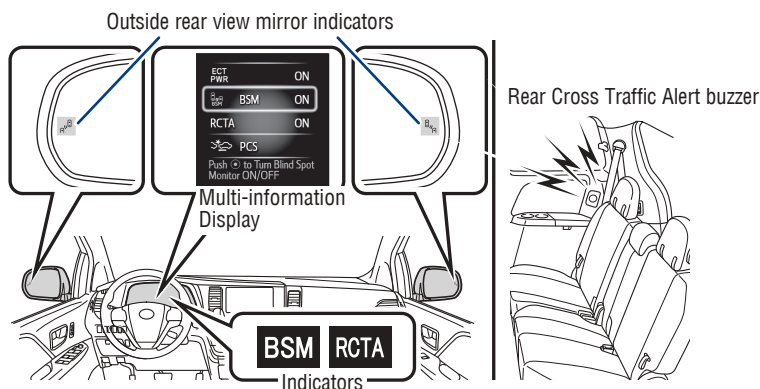


HAC helps prevent rolling backwards on an incline. To engage, push the brake pedal farther down while at a complete stop until a beep sounds and slip indicator illuminates. HAC holds for approximately 2 seconds after releasing brake pedal.

*Refer to the Owner's Manual for more details.*

## FEATURES & OPERATIONS

### **Blind Spot Monitor with Rear Cross Traffic Alert (BSM w/RCTA) (if equipped)**



#### **The Blind Spot Monitor is a system that has two functions:**

- The Blind Spot Monitor function (assists the driver in decision-making when to change lanes)
- The Rear Cross Traffic Alert function (assists the driver when backing up)

The system is designed to use radar sensors to detect vehicles traveling in the Sienna's blind spot. If a vehicle is detected the driver will be alerted via the outside rear view side mirror indicators.

*Refer to the Owner's Manual for limitations and more details on this system before attempting to use it.*

### **Rear view monitor system (if equipped)**

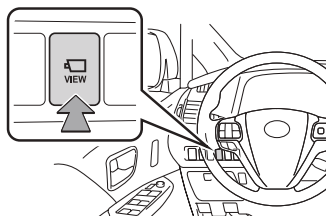


The rear view monitor system displays an image of the view from the bumper of the rear area of the vehicle. The camera for the rear view monitor system is located above the license plate.

To adjust the image on the rear view monitor screen, press the "MENU" button and select "Display" on the screen. Select "Camera" to adjust the screen contrast and brightness.

*Refer to the "Navigation and Multimedia System Owner's Manual" for limitations and more details on this system.*

## Bird's Eye View Camera with Perimeter Scan Function (if equipped)



### Moving view

Body color setting switch

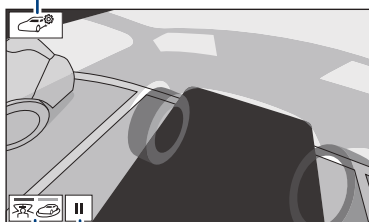


Rotation pause switch

Display mode switching button

### See through view

Body color setting switch



Rotation pause switch

Display mode switching button

The Bird's Eye View Camera with Perimeter Scan function assists the driver in viewing the surroundings, when operating at low speeds or parking, by combining front, side and rear cameras and displaying an overhead image on the Audio Multimedia screen.

To view or turn OFF the screen, press the camera switch when the shift lever is in the "P" position. It will display two angles, the Moving view and the See Through view.

Refer to section 6-3 in the "Navigation and Multimedia System Owner's Manual" for limitations and more details on this system.

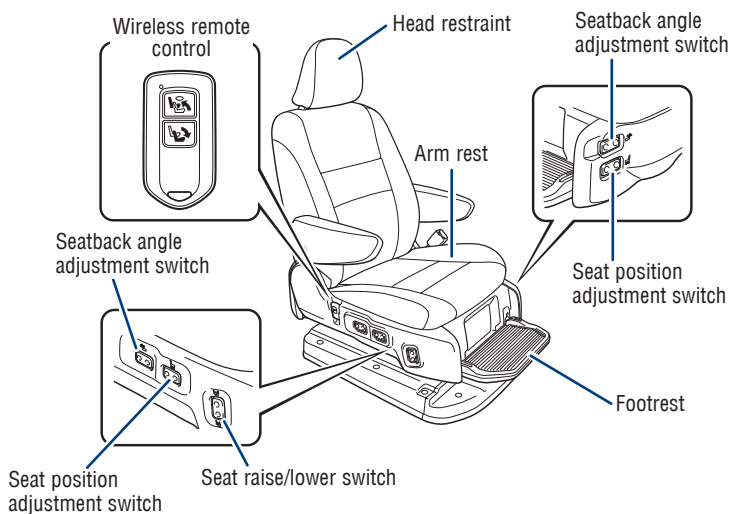
## FEATURES & OPERATIONS

### **AUTO ACCESS SEAT (if equipped)**

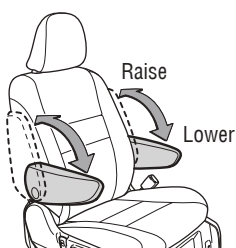
The AUTO ACCESS SEAT (right-hand second seat) can be rotated, raised and lowered electrically to help the seat occupant easily enter and exit the vehicle. Have all operations carried out by an assistant.

Refer to the AUTO ACCESS SEAT Owner's Manual for more information.

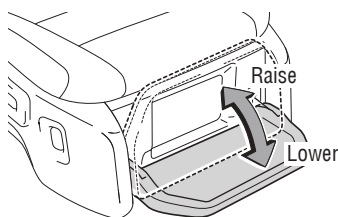
#### AUTO ACCESS SEAT



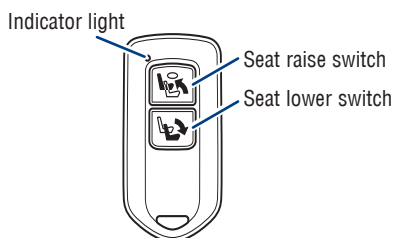
#### ARMRESTS



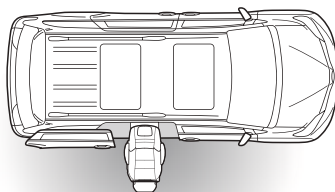
#### FOOTREST



#### WIRELESS REMOTE CONTROL



#### EFFECTIVE RANGE

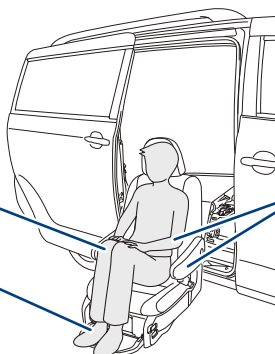


Approximately 3.3 ft. (1 m)

## CORRECT RIDING POSTURE

Align both knees and  
sit inside the seat

Lower the footrest  
and place both feet  
on the footrest



Lower the armrests,  
keep both arms  
inside the armrests

## OPERATING THE AUTO ACCESS SEAT

When operating the AUTO ACCESS SEAT, confirm the following:

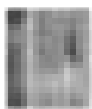
- Park the vehicle on a flat surface and leave the engine running.
- Shift the shift lever to P and set the parking brake.
- Check that there are no people or items of luggage around the AUTO ACCESS SEAT and the vehicle.
- The occupant is sitting correctly in the AUTO ACCESS SEAT.
- The seat belt is not caught up in the AUTO ACCESS SEAT.
- The occupant of the right-hand third seat is safe.
- Open the right-hand sliding door fully when opening the door.

*For more details, refer to the AUTO ACCESS SEAT Owner's Manual.*

## Quick overview-Toyota Safety Sense™ P (TSS-P)

Toyota Safety Sense™ P (TSS-P) is a set of active safety technologies designed to help mitigate or prevent collisions across a wide range of traffic situations, in certain conditions. TSS-P is designed to help support the driver's awareness, decision making and vehicle operation contributing to a safe driving experience.

**Refer to the Owner's Manual for operation, setting adjustments, limitations and more details to understand these functions and complete safety precautions. For more information, please go to <http://www.toyota.com/safety-sense>**



### Pre-Collision System with Pedestrian Detection (PCS w/PD)

PCS w/PD is designed to provide alert, mitigation, and/or avoidance support in certain conditions, when the system detects a potential collision with a preceding vehicle is likely to occur.

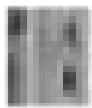
The advanced millimeter-wave radar sensor system is designed to work with the camera sensor to help recognize a preceding pedestrian, and provide an alert, mitigation and/or avoidance support in certain conditions.



### Lane Departure Alert with Steering Assist (LDA w/SA)

LDA w/SA is designed to provide notification when the system detects an unintended lane departure.

The Steering Assist function is designed to provide small corrective steering inputs to the steering wheel for a short period of time to help keep the vehicle in its lane.



### Dynamic Radar Cruise Control (DRCC)

DRCC is designed to help maintain a pre-set distance to a preceding vehicle when the preceding vehicle is traveling at a lower speed.

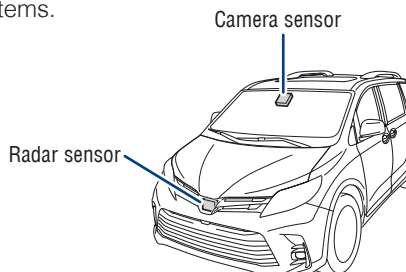


### Automatic High Beams (AHB)

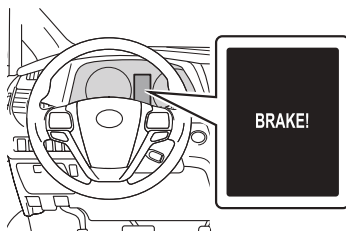
AHB is designed to detect the headlights of oncoming vehicles and the tail lights of preceding vehicles and switch between high beams and low beams as appropriate.

## Sensors

TSS-P combines an in-vehicle camera mounted in front of the inside rear view mirror and a millimeter-wave radar mounted in the front grill. These sensors support the driver assist systems.



# Pre-Collision System with Pedestrian Detection (PCS w/PD)



The Pre-Collision System uses a radar sensor and camera sensor to help detect a vehicle or pedestrian in front of your vehicle.

As there is a limit to the degree of recognition accuracy and control performance that this system can provide, do not overly rely on this system. This system will not prevent collisions or lessen collision damage or injury in every situation. Do not use PCS instead of normal braking operations under any circumstances. Do not attempt to test the operation of the pre-collision system yourself, as the system may not operate or engage, possibly leading to an accident. In some situations, such as when driving in inclement weather such as heavy rain, fog, snow or a sandstorm or while driving on a curve and for a few seconds after driving on a curve, a vehicle or pedestrian may not be detected by the radar and camera sensors, preventing the system from operating or engaging properly.

*Refer to the Toyota Owner's Manual for a list of additional situations in which the system may not operate properly.*

## Pre-Collision Warning

When the system determines that the possibility of a frontal collision is high, a buzzer will sound and a warning message will be displayed on the Multi-Information Display (MID) to urge the driver to take evasive action.

## Pre-Collision Brake Assist

If the driver notices the hazard and brakes, the system may provide additional braking force using Brake Assist. This system may prime the brakes and may apply greater braking force in relation to how strongly the brake pedal is depressed.

## Pre-Collision Braking

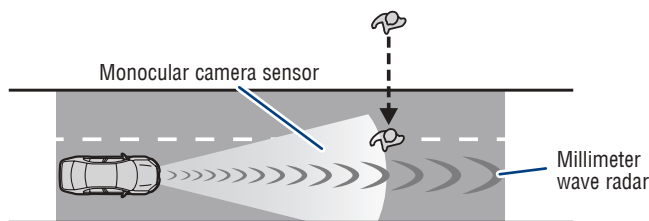
If the driver does not brake in a set time and the system determines that the possibility of a frontal collision with a preceding vehicle is extremely high, the system may automatically apply the brakes, reducing speed in order to help the driver reduce the impact and in certain cases avoid the collision.

*Refer to the Toyota Owner's Manual for additional information on PCS w/PD operation, settings adjustments, limitations, and precautions before attempting to use it.*

# TOYOTA SAFETY SENSE™

## PCS PEDESTRIAN DETECTION

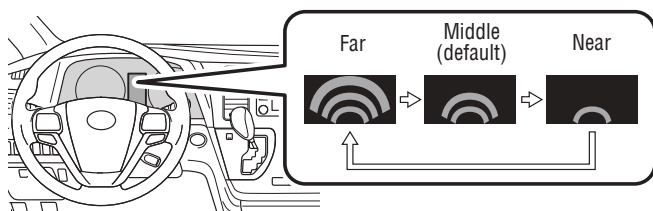
Under certain conditions, the PCS system included with the TSS-P package may also help to detect a pedestrian in front of your vehicle using the in-vehicle camera and millimeter-wave radar. The in-vehicle camera of PCS detects a potential pedestrian based on size, profile, and motion of the detected pedestrian. However, a pedestrian may not be detected depending on the conditions, including the surrounding brightness and the motion, posture, size, and angle of the potential detected pedestrian, preventing the system from operating or engaging.










As part of the Pre-Collision System, this function is also designed to first provide an alert and then automatic braking if needed.

*Refer to the Toyota Owner's Manual for additional limitations and information.*

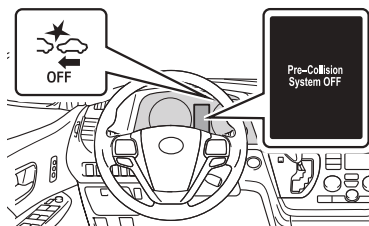
## CHANGING PCS ALERT TIMING







- (1) Press “<>” switches and select  from the MID.
- (2) Press “<>” or  switches and select the  setting function from the MID and then press . The setting screen is displayed.
- (3) Select “Sensitivity” and then press . Each time  is pressed, the response to the PCS alert timing changes as shown above. You can press  to go back to the menu.

**Note:** PCS is enabled each time the engine switch is turned to Ignition On. The system can be disabled/enabled and the alert timing of the system can be changed. (Alert timing only, brake operation remains the same).



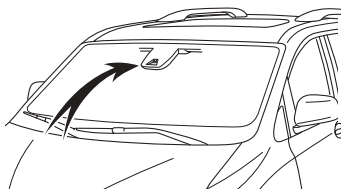


- (1) Press “<>” switches and select  from the MID.
- (2) Press “<>” or “<” switches and select the  setting function from the MID and then press “”. The setting screen is displayed.
- (3) Select **PCS** and then press “”. The Pre-Collision System will be disabled.

You can press “” to go back to the menu.

**Note: PCS is enabled each time the engine switch is turned to Ignition On. The system can be disabled/enabled and the alert timing of the system can be changed. (Alert timing only, brake operation remains the same).**

## Lane Departure Alert with Steering Assist (LDA w/SA)

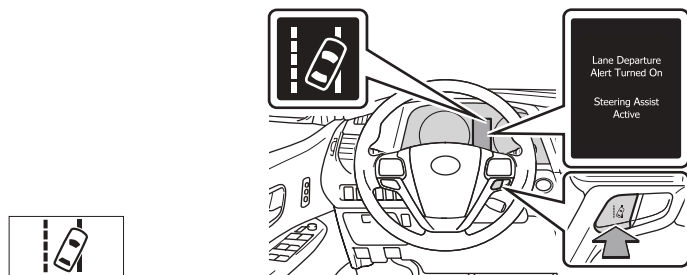


LDA in TSS-P uses an in-vehicle camera designed to detect visible white and yellow lane markers in front of the vehicle and the vehicle's position on the road. If the system determines that the vehicle is starting to unintentionally deviate from its lane, the system alerts the driver with an audio and visual alert. When the alerts occur, the driver must check the surrounding road situation and carefully operate the steering wheel to move the vehicle back to the center part of their lane.

LDA is designed to function at speeds of approximately 32 MPH or higher on relatively straight roadways.

In addition to the alert function, LDA w/SA also features a steering assist function. When enabled, if the system determines that the vehicle is on a path to unintentionally depart from its lane, the system may provide small corrective steering inputs to the steering wheel for a short period of time to help keep the vehicle in its lane.

## TURNING THE LDA SYSTEM ON/OFF



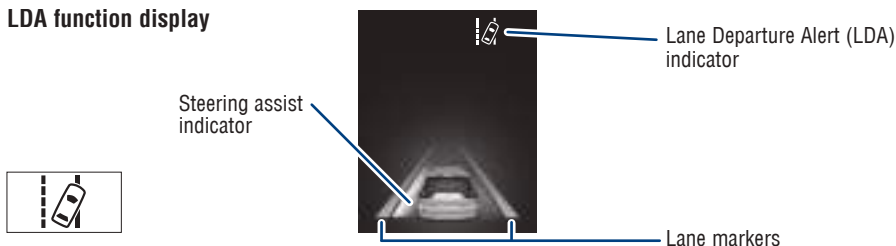
Press the LDA switch to turn the LDA system on. Depress again to turn it off.

**Note: The system will continue in the last state it was in (ON or OFF) when the engine is started again.**

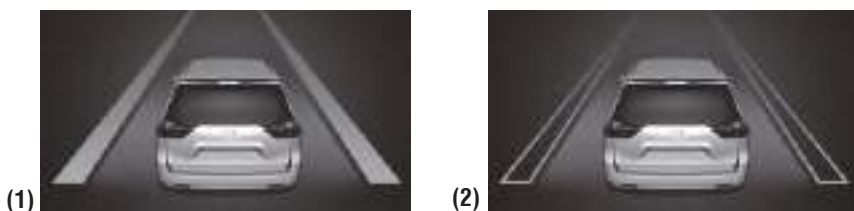
Refer to the Toyota Owner's Manual for additional information on LDA operation, settings adjustments, limitations, and precautions before attempting to use it.


## LANE DEPARTURE ALERT

### LDA function display



Lane Departure Alert (LDA) indicator flashes amber when operating







The LDA function  displays when the Multi-Information Display (MID) is switched to the driving assist system information screen.

(1) The system displays solid white lines on the LDA indicator when visible lane markers on the road are detected. A side flashes orange to alert the driver when the vehicle deviates from its lane.

(2) The system displays outlines on the LDA indicator when lane markers on the road are not detected or the function is temporarily cancelled.

**Note: When operation conditions are no longer met, a function may be temporarily canceled. However, when the operation conditions are met again, operation of the function is automatically restored. For example, LDA may not function on the side(s) where white/yellow lines are not detectable.**

## DISABLING STEERING ASSIST

- (1) Press “<>” switches to find and select .
- (2) Press “<>” or “◇” switches to find the  setting function and then press “”. The LDA Steering Assist system will be disabled.
- (3) You can press “” to go back to the menu.







**Note: Operation of the LDA system and setting adjustments continues in the same condition regardless of Ignition cycle until changed by the driver or the system is reset.**

## ADJUSTING LDA ALERT SENSITIVITY

The driver can adjust the sensitivity of the LDA (warning) function from the Multi-Information Display (MID) customization screen.

**High** - Is designed to warn approximately before the front tire crosses the lane marker.

**Normal** - Is designed to warn approximately when the front tire crosses the lane marker.

- (1) Press “<>” switches to find and select .
- (2) Press “<>” or “◇” switches to find the  setting function and then press “”. The setting screen is displayed.
- (3) Select “Sensitivity” and then press “.
 Each time “” is pressed, the response to the LDA alert sensitivity changes. You can press “” to go back to the menu.

**Note: Operation of the LDA system and setting adjustments continues in the same condition regardless of Ignition cycle until changed by the driver or the system is reset.**

## SWAY WARNING SYSTEM



Continuous lane deviations from swaying.








Gentle swaying from driver's inattentiveness.



Acute steering wheel operation after the number of operations decrease due to driver's inattentiveness.






SWS is a function of LDA and is designed to detect swaying based on the vehicle location in the lane and the driver's steering wheel operation. To help prevent swaying, the system alerts the driver using a buzzer sound and a warning displays in the MID.

## DISABLING LDA SWAY WARNING SYSTEM

- (1) Press “<>” switches to find and select .
  - (2) Press “<>” or “◇” switches and select the  setting function and then press “.
- (3) Press “” each time to change the setting.
  - (4) Press “” to go back to the menu.

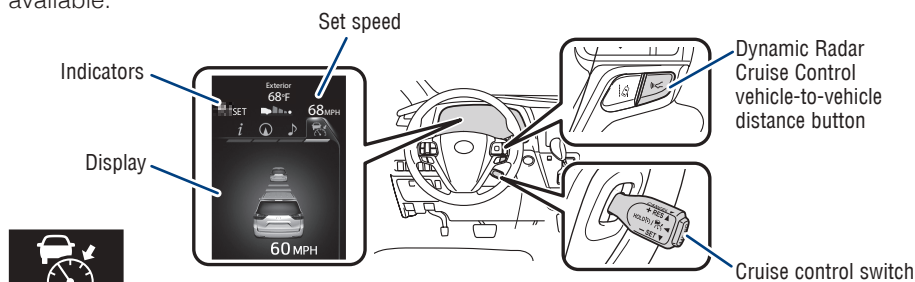
**Note: Operation of the LDA system and setting adjustments continues in the same condition regardless of Ignition cycle until changed by the driver or the system is reset.**

## ADJUSTING SWAY ALERT SENSITIVITY

- (1) Press “<>” switches to find and select .
  - (2) Press “<>” or “◇” switches and select the  setting function and then press “.
- (3) Press “” each time to change the setting.
  - (4) Press “” to go back to the menu.

## Dynamic Radar Cruise Control (DRCC)

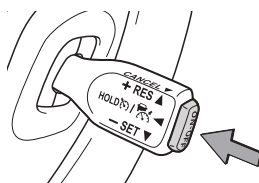
DRCC helps maintain a pre-set distance to a preceding vehicle when the preceding vehicle is traveling at a lower speed. This mode is always selected first when the cruise control button is depressed. Constant speed cruise control mode is also available.



Refer to the Toyota Owner's Manual for additional information on DRCC operation, settings adjustments, limitations, and precautions before attempting to use it.

### TURNING SYSTEM ON/OFF

(1)

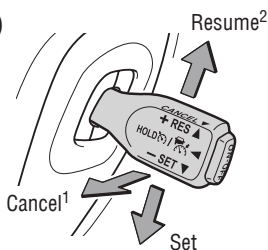


Push once: On  
Push again: Off

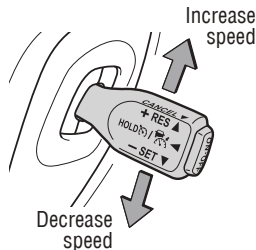
Refer to page 45 for switching to Constant Speed (Cruise) Control Mode.

### ADJUSTING DRCC SET SPEED

(2)



(3)



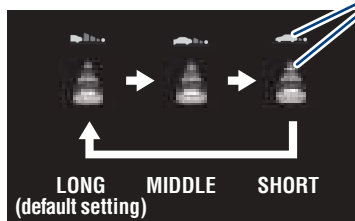
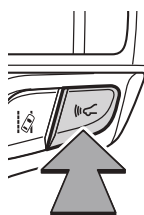
Vehicle will cruise at a set speed, decelerate to maintain selected distance from a slower vehicle traveling in front and accelerate back up to the selected speed if the vehicle in front changes lanes or speeds up.

- (1) Push the ON-OFF button. The "RADAR READY" or "R" indicator will come on.
- (2) Push the lever down to SET speed, push it up to Resume and pull it or depress brake to Cancel.
- (3) Push up to increase the set speed, push down to decrease (1 mph [1.6 km/h] or 1 km/h [0.6 mph] increments).

<sup>1</sup> The set speed may also be cancelled by depressing the brake pedal.


<sup>2</sup> The set speed may be resumed once vehicle speed exceeds 25 mph.

## ADJUSTING DISTANCE



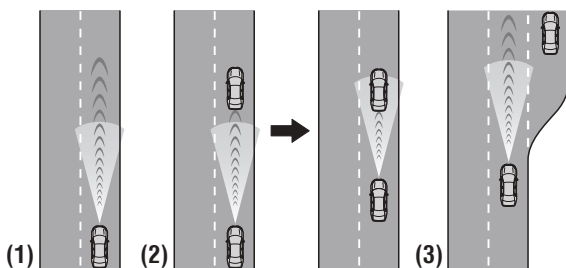
Preceding vehicle mark

To change the vehicle-to-vehicle distance

Push the “ ” button to cycle through the settings, which will change progressively.

This mode employs a radar sensor to detect the presence of vehicles up to approximately 328 ft (100 m) ahead, determines the current vehicle-to-vehicle following distance and operates to maintain a preset following distance from the vehicle ahead. These distances vary based on vehicle speed.

**Note: Vehicle-to-vehicle distance will close in when traveling on long downhill slopes.**



**(1) Constant speed cruising when there are no vehicles ahead**

The vehicle travels at the speed set by the driver. The desired vehicle-to-vehicle distance can also be set by operating the vehicle-to-vehicle distance control.

**(2) Deceleration cruising and follow-up cruising when a preceding vehicle driving slower than the set speed appears**

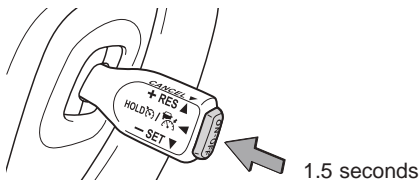
When a vehicle is detected running ahead of you, the system automatically decelerates your vehicle. When a greater reduction in vehicle speed is necessary, the system applies the brakes (the brake lights will come on at this time). The system will respond to changes in the speed of the vehicle ahead in order to maintain the vehicle-to-vehicle distance set by the driver. A warning tone warns you when the system cannot decelerate sufficiently to prevent your vehicle from closing in on the vehicle ahead.


**(3) Acceleration when there are no longer any preceding vehicles driving slower than the set speed**

The system accelerates until the set speed is reached. The system then returns to constant speed cruising.

**Note: When your vehicle is too close to a vehicle ahead, and sufficient automatic deceleration via the cruise control is not possible, the display will flash and the buzzer will sound to alert the driver. An example of this would be if another driver cuts in front of you while you are following a vehicle. Depress the brake pedal to ensure an appropriate vehicle-to-vehicle distance.**

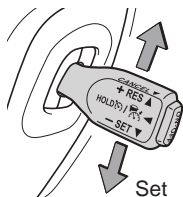
## SWITCHING TO CONSTANT SPEED (CRUISE) CONTROL MODE



If you are already using DRCC “”, push ON-OFF button to turn the system off first, then push and hold ON-OFF button for at least 1.5 seconds to switch.

**Note:** When the engine is turned off, it will automatically default to DRCC.

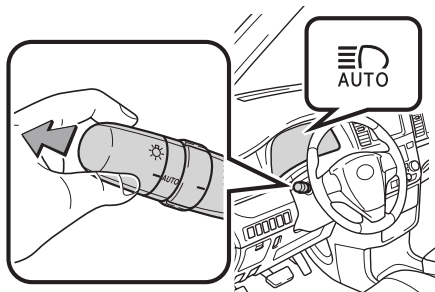
## SETTING CONSTANT SPEED (CRUISE) CONTROL



**To adjust speed or cancel, see steps (2) and (3) of ADJUSTING SET SPEED on page 43.**

*Refer to the Toyota Owner's Manual for additional information on DRCC operation, settings adjustments, limitations, and precautions before attempting to use it.*

## Automatic High Beams (AHB)



AHB is a safety system designed to help drivers see more of what's ahead at nighttime while reducing glare for oncoming drivers. When enabled, AHB uses an in-vehicle camera to help detect the headlights of oncoming vehicles and tail lights of preceding vehicles, then automatically switches between high and low beams as appropriate to provide the most light possible and enhance forward visibility. By using high beams more frequently, the system may allow earlier detection of pedestrians and obstacles.

*Refer to the Toyota Owner's Manual for additional information on AHB operation, settings adjustments, limitations, and precautions before attempting to use it.*

### ACTIVATING THE AHB SYSTEM

- (1) With the engine switch in ON/IGNITION ON mode and headlight switch turned to "AUTO" position, push lever away from you.

The "AHB AUTO" indicator will come on when the headlights are turned on automatically to indicate that the system is active.

- (2) Pull the lever back toward you to turn the AHB system off.

The "AHB AUTO" will turn off and the "OFF" indicator turns on.

### CONDITIONS WHERE AHB WILL TURN ON/OFF AUTOMATICALLY

When all of these conditions are met, high beams will be automatically turned on (after approximately 1 second):

- Vehicle speed is above approximately 20 mph (32 km/h).
- The area ahead of the vehicle is dark.
- There are no oncoming or preceding vehicles with headlights or tail lights turned on.
- There are few street lights on the road ahead.

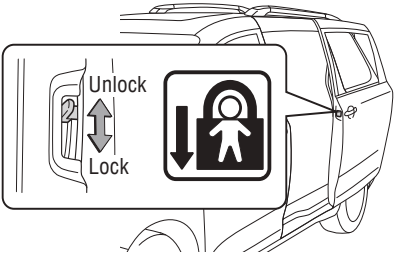
If any of these conditions occur, the system is designed to automatically turn off high beams:

- Vehicle speed drops below approximately 20 mph (32 km/h).
- The area ahead of the vehicle is not dark.
- Oncoming or preceding vehicles have headlights or tail lights turned on.
- There are many streetlights on the road ahead.



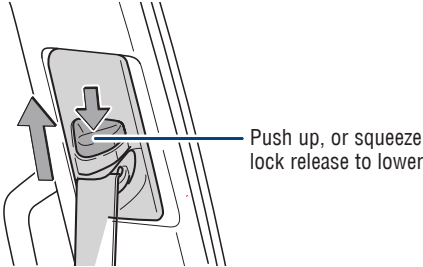
Rear door child safety locks

Rear door



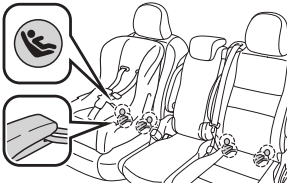
Moving the lever downward will allow the door to be opened only from the outside.

Seat belts-Shoulder belt anchor

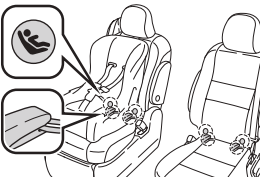


Child restraint anchors

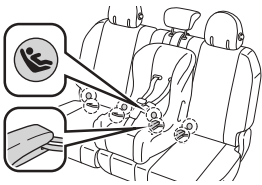
2nd seat  
8 passenger models



2nd seat  
7 passenger models



3rd seat



## SAFETY & EMERGENCY FEATURES

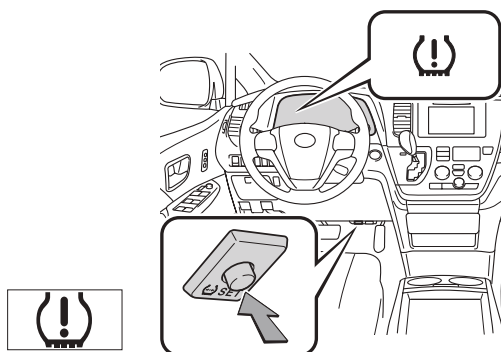
### Seat belts



**NOTE:** If a passenger's seat belt is fully extended, then retracted even slightly, the Automatic locking retractor (ALR) will prevent it from being re-extended beyond that point, unless fully retracted again. This feature is used to help hold child restraint systems securely.

To find more information about seat belts, and how to install a child restraint system, refer to the Owner's Manual.

### Tire Pressure Monitoring (warning) System (TPMS)



#### System reset initialization

1. Push and hold "SET" button until the indicator blinks three times.
2. Wait a few minutes to allow initialization to complete.

After adjusting tire pressures, or after tires have been rotated or replaced, turn the ignition switch to "ON"/engine switch to IGNITION ON and press and hold the "SET" button until indicator blinks three times. Let the vehicle sit for a few minutes to allow initialization to complete.

Refer to the load label on the door jamb or the Owner's Manual for tire inflation specifications.

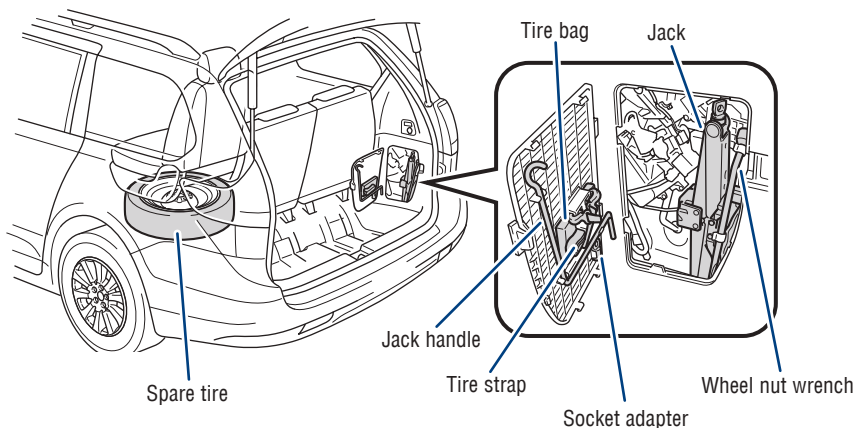
If the tire pressure indicator flashes for more than 60 seconds and then remains on, take the vehicle to your local Toyota dealer.

**NOTE:** The warning light may come on due to temperature changes or changes in tire pressure from natural air leakage. If the system has not been initialized recently, setting the tire pressures to factory specifications should turn off the light.

## Spare tire & tools

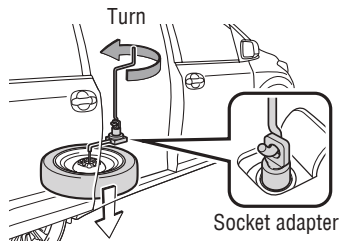
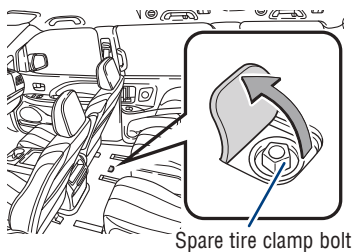
All-Wheel Drive models are equipped with run-flat tires. *Refer to the Owner's Manual for more details.*

### TOOL & SPARE TIRE LOCATION



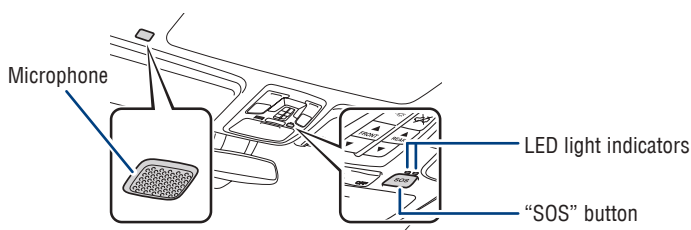
### REMOVING THE SPARE TIRE

#### Front Wheel Drive models



*Refer to the Owner's Manual for jack positioning and tire changing procedures.*

### **Safety Connect (if equipped)**



Safety Connect is a subscription-based telematics service that uses Global Positioning System (GPS) data and embedded cellular technology to provide safety and security features to subscribers. Safety Connect is supported by Toyota's designated response center, which operates 24 hours per day, 7 days per week.

**Services for subscribers include:**

- Automatic collision notification
- Stolen vehicle location
- Emergency assistance (“SOS” button)
- Enhanced roadside assistance

Contact your dealer for more information about Safety Connect.

*For details, refer to the “Owner’s Manual” or visit [www.Toyota.com/safety-connect](http://www.Toyota.com/safety-connect).*

## Star Safety System™

Your vehicle comes standard standard with the Star Safety System™, which combines Anti-lock Braking System (ABS), Brake Assist (BA), Electronic Brake-force Distribution (EBD), Smart Stop Technology (SST), Traction Control (TRAC) and Vehicle Stability Control (VSC).

*Refer to the Owner's Manual for more details and important information on limitations to these systems.*

### ANTI-LOCK BRAKE SYSTEM (ABS)

Toyota's ABS sensors detect which wheels are locking up and limits wheel lockup by "pulsing" each wheel's brakes independently. Pulsing releases brake pressure repeatedly for fractions of a second. This helps the tires attain the traction that current road conditions will allow, helping you to stay in directional control.

### BRAKE ASSIST (BA)

Brake Assist is designed to detect sudden or "panic" braking, and then add braking pressure to help decrease the vehicle's stopping distance. When there's only a split second to react, Brake Assist can add additional brake pressure more quickly than just the driver alone can.

### ELECTRONIC BRAKE FORCE DISTRIBUTION (EBD)

Toyota's ABS technology has Electronic Brake-force Distribution (EBD) to help maintain control and balance when braking. EBD responds to sudden stops by redistributing brake force to enhance the braking effectiveness of all four wheels.

### SMART STOP TECHNOLOGY (SST)

Smart Stop Technology automatically reduces engine power when the accelerator and brake pedals are pressed simultaneously under certain conditions.

SST engages when the accelerator is depressed first and the brakes are applied firmly for longer than one-half second at speeds greater than five miles per hour.

SST doesn't engage if the brake pedal is depressed before the accelerator pedal, allowing vehicles to start on a steep hill and safely accelerate without rolling backward.

### VEHICLE STABILITY CONTROL (VSC)

VSC helps prevent loss of traction during cornering by reducing engine power and applying brake force to selected wheels.

Toyota's VSC monitors steering angle and the direction your vehicle is traveling. When it senses that the front or rear wheels begin to lose traction, VSC reduces engine power and applies braking to selected wheels. This helps restore traction and vehicle control.

# SAFETY & EMERGENCY FEATURES

## TRACTION CONTROL (TRAC)

VSC helps prevent loss of traction during cornering by reducing engine power, and Traction Control helps maintain traction on loose gravel and wet, icy, or uneven surfaces by applying brake force to the spinning wheel(s).

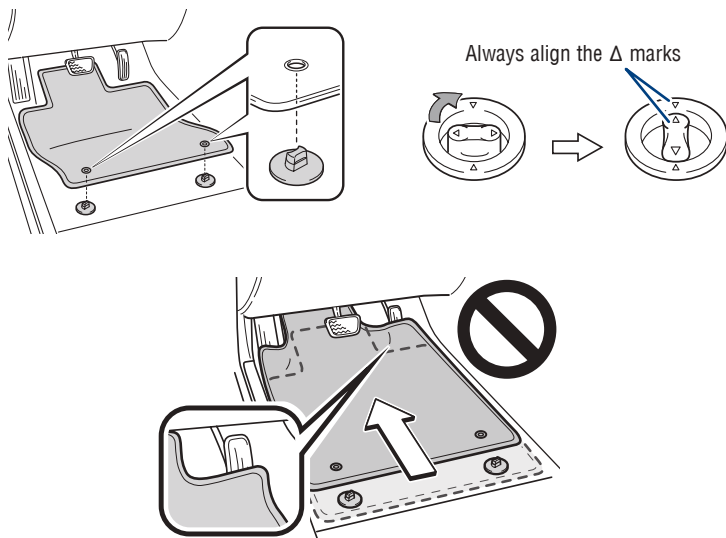
Toyota's TRAC sensors are activated when one of the drive wheels starts to slip. TRAC limits engine output and applies the brakes to the spinning wheel. This transfers power to the wheels that still have traction to help keep you on track.

## Floor mat installation

There are two types of Toyota floor mats: carpeted and all-weather. Each vehicle has model-specific floor mats. Installation is easy.

To keep your floor mat properly positioned, follow these steps:

- Only use Toyota floor mats designed for your specific model.
- Use only one floor mat at a time, using the retaining hooks to keep the mat in place.
- Install floor mats right side up.





# **BLUETOOTH® DEVICE PAIRING SECTION**

Do not attempt the Bluetooth® Pairing process while driving.



To begin the Bluetooth® Pairing process, press the HOME button on the faceplate of your multimedia system.

## Bluetooth® Pairing for your phone

Pairing your phone is the first step in connecting with your Toyota for hands-free calling and for audio streaming via Bluetooth. This pairing process is quick and easy. All you have to do is setup the phone and multimedia system to form a connection.<sup>1</sup>

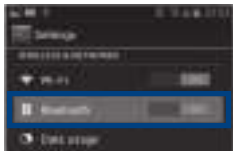


Audio / Audio Plus / Premium Audio

**STEP 1** Press [MENU] on the faceplate, then select "Setup" on display screen.



iPhone bluetooth Menu



Android bluetooth Menu



**STEP 2** Ensure Bluetooth is turned on for your device.

**STEP 3** Select "Bluetooth", then select "Add New Device" on display screen.



**STEP 4** Select "Device Name".



**STEP 5** Check the display on your smart phone. Does the PIN XXXX match the PIN displayed? If it does select "Pair".

<sup>1</sup> Some Android devices may have slightly different SETTINGS screen layout depending on manufacturer of device and Android OS version.

Bluetooth® Pairing for your phone (cont.)

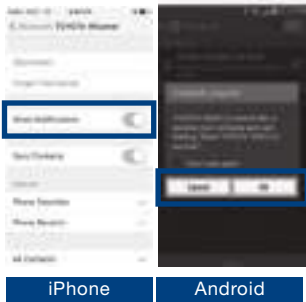


**STEP 6** "Connecting" displays while device is forming the connection to your multimedia system.



**STEP 7** Enable Notifications (text message). While pairing your device message will display: **"You may need to allow message access on your phone"**.

Note: You may also select "Skip" on display screen to skip enabling notifications. If skipped proceed to **Step 8**.



**STEP 8** Turn on "Show Notifications" for iPhone or "ON" for Android.



**STEP 9** A confirmation will appear once your phone has been paired and connected.

NOTES



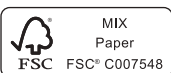
**Sienna**

**Quick Reference Guide 2020**



00505QRG20SIE

**toyota.com**



Printed in U.S.A. 4/19  
19-MKG-13022