

PAGANI

Utopia



Inspirations and design cues

A GLANCE TO THE FUTURE, A TRIBUTE TO THE PAST

01

PAGANI
Utopia

Inspirations and design cues

A GLANCE TO THE FUTURE, A TRIBUTE TO THE PAST

- A **creative and stylistic process that took 6 years**, with thousands of drawings, ten 1:5 scale models and two 1:1 scale models
- Aspiring to be a **timeless icon**, to continue the story of the Zonda and the Huayra, projecting the brand into the future of the hypercar
- Refined **quintessence** in the shapes and details
- Evocative concepts **from the past**, such as colors and materials inspired by the '50s and '60s
- **Proportions and iconic features**, follow in the spirit of the continuity of the design traits which make a Pagani unique
- Research of **harmony and emotions**
- **Sensory authenticity**



PAGANI

Utopia



PAGANI

Utopia

Bodywork

SCULPTURAL IMMEDIACY OF THE SHAPES

02

Bodywork

SCULPTURAL IMMEDIACY OF THE SHAPES

- **Covered front fairing headlights**, with a body machined from solid aluminum alloy and inspired by iconic design objects from the 1950s
- **Front splitter and bonnet** integrating all the cooling aerodynamic ducts
- **Lateral sills** that wrap the chassis, designed to effortlessly channel the lateral air flow
- **Rear bonnet** with prominent wheel arches and the suspended active aero integrated in the rear ellipse
- **Suspended tail lights** inspired by jet turbines
- **Conceptual and functional optimization** of the bodywork parts in composite materials, resulting in a **20% reduction of the components**



PAGANI

Utopia

Engine

PURE LEGACY OF THE V12 TWIN-TURBO

03

Engine

PURE LEGACY OF THE V12 TWIN-TURBO

- New **Pagani V12 60° 5980 cc twin turbochargers**, developed on a bespoke basis exclusively for Pagani by Mercedes-AMG
- **864 HP / 852 BHP (635 kW) at 6000 RPM**
- **Max torque of 1100 Nm** from 2800 RPM to 5900 RPM
- New valvetrain system to take the **limiter to 6700 RPM**
- Dry weight: **262 kg / 577 lb**
- **3 vehicle prototypes dedicated** to the engine development for almost 2 years
- Compliant to all **global emissions regulations**



PAGANI

Utopia

Trasmission

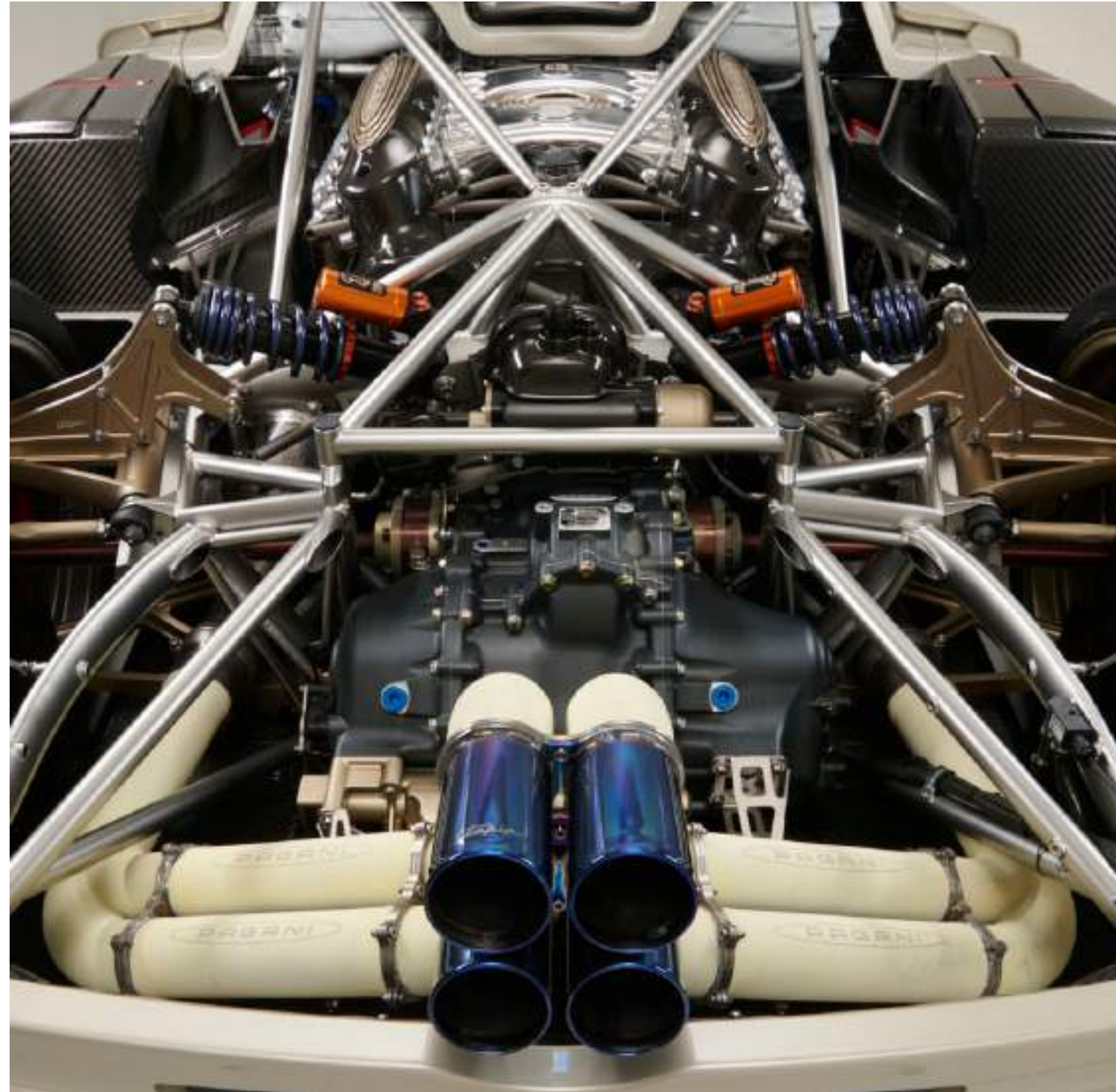
A PHILOSOPHICAL CHOICE

04

Trasmission

A PHILOSOPHICAL CHOICE

- Pagani by Xtrac **7-speed transversal gearbox**, to transfer all the power and the exceptional responsiveness of the Pagani V12 to the road
- **Specific gear ratios** for the driving dynamics of Utopia
- New **triple plate clutch system with increased diameter** for a better torque transfer, an **electronically managed differential** and a **racing derived tripod-axis drive shaft system**
- The transversal architecture contributes both to the **overall weight reduction**, as well as to the **reduction of the polar inertia** to significantly limit the unwanted oversteer, a dangerous behavior typical of mid-engine cars
- Also available in a **manual version** for a driving experience in the name of mechanical purity



PAGANI

Utopia

Aerodynamics

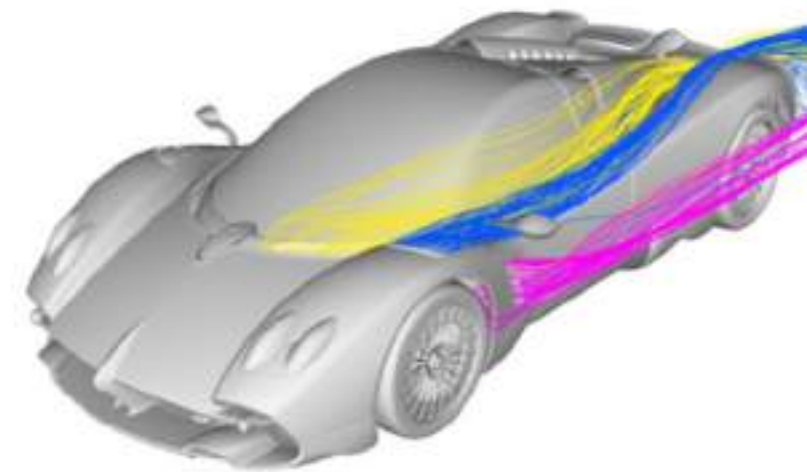
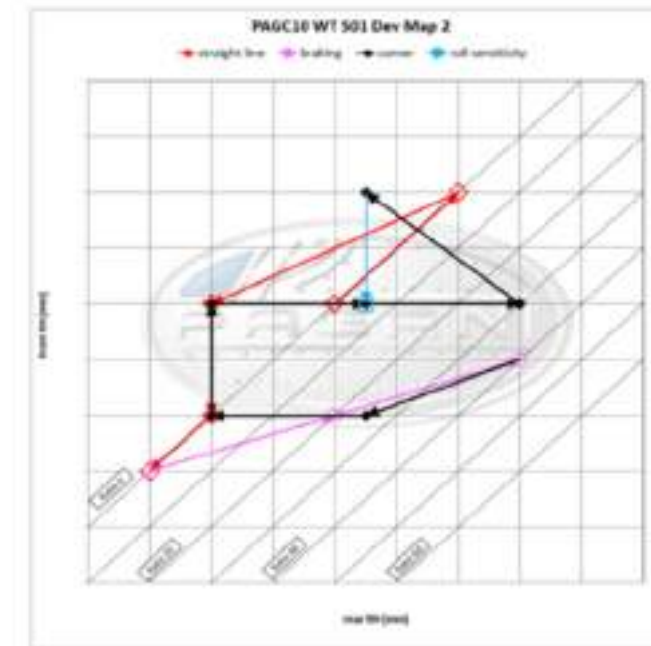
THE PERFORMANCE OF ELEGANCE

05

Aerodynamics

THE PERFORMANCE OF ELEGANCE

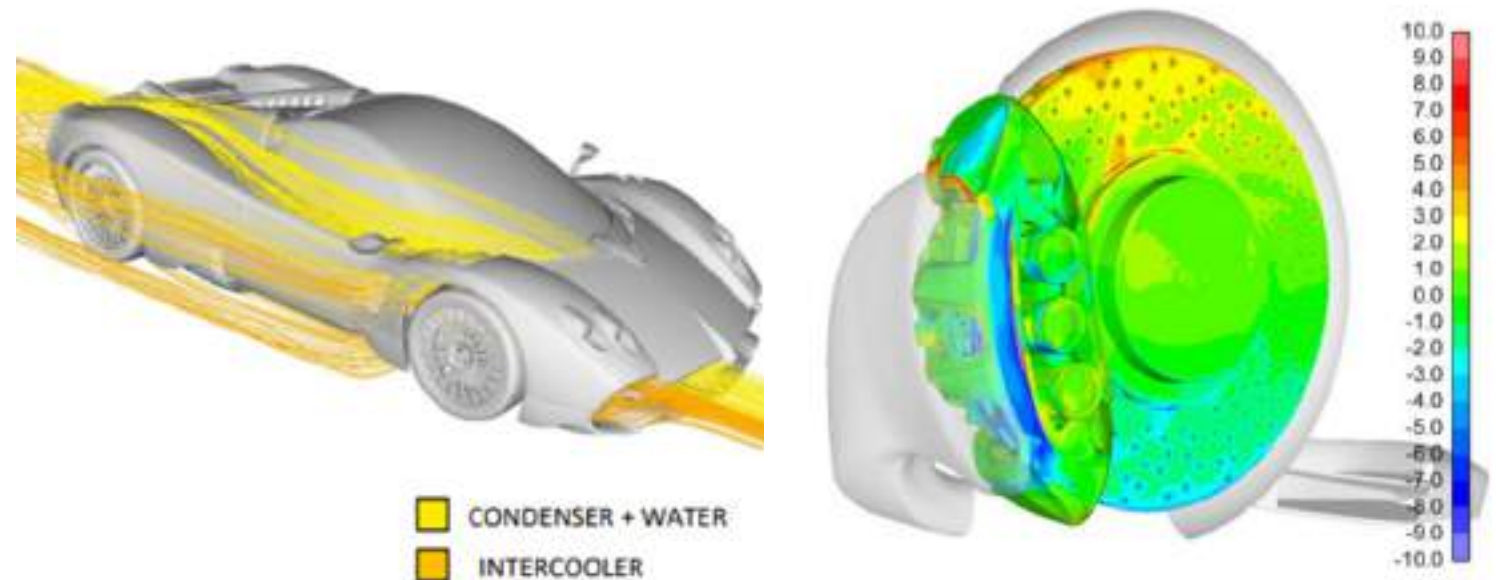
- Preliminary evaluations, both overall as well as in detail via **CFD analysis**, getting to analyze hundreds of numerical configurations
- **Wind tunnel model** with fully working suspension, consisting of almost 700 individual components
- Numerous wind tunnel sessions to acquire and validate CFD data, in order to **optimize the handling of the car in various set-up conditions**
- Without the need for aerodynamic add-ons, **Utopia incorporates the function** of these typical appendices into its overall shape for greater downforce and a reduced aerodynamic drag coefficient
- Aerodynamic balance of **46-54%** throughout the entire speed envelope



Aerodynamics

THE PERFORMANCE OF ELEGANCE

- **Front splitter** developed to generate downforce through a dedicated airfoil profile
- **Aerodynamic ducts** perfectly integrated within the bodywork components
- **Cooling solutions for the highly energized flow braking system** for discs, calipers and pads, hence allowing repeatability of braking performance for an extended period of time
- **Rear extractor to generate downforce with minimum resistance**
- **Active suspended aero** on the rear, integrated within the elliptical design of the bonnet and combined with the electronically controlled suspension, to gain maximum stability in every driving condition
- Goal to achieve a **predictive handling**, by reducing the sensitivity to the ground clearance in order to **increase driving safety**



PAGANI

Utopia

Chassis

DESIGN AND RIGIDITY AS ONE

06

Chassis

DESIGN AND RIGIDITY AS ONE

- Monocoque chassis made with the latest generation of composite materials including **Carbo-Titanium HP62 G2** and **Carbo-Triax HP62**, complete with a perfectly integrated rollover bar imbedded within the roof structure
- Unique design to provide a **spacious environment and integrate the dashboard**
- **Torsional rigidity** increased by **+10,5%** compared to previous Pagani road legal vehicles
- Front and rear tubular subframes in **Chromium-Molybdenum alloy steel (CrMo)**



PAGANI

Utopia



PAGANI

Utopia

Suspension

FEELING EVERY DETAIL OF THE ROAD

07

Suspension

FEELING EVERY DETAIL OF THE ROAD

- Developed with optimized elasto-kinematic for the road and intensively tested thanks to the laboratory that is the Huayra R, to ensure the **maximum driving stability**
- Made of forged aluminum alloy, with **independent double wishbone with helical springs** and coaxial shock absorbers
- **Semi-active shock absorbers** designed to attack curbs and be rigid under braking conditions on the circuit, but at the same time comfortable when driving on the road thanks to the different driving modes
- **Integrated vehicle dynamic control unit** for the simultaneous management of all active controls, including the electro-assisted steering box





Brakes

08

TECHNOLOGY AT THE SERVICE OF PERFORMANCE AND SAFETY

Brakes

TECHNOLOGY AT THE SERVICE OF PERFORMANCE AND SAFETY

- Braking excellence guaranteed by the newly developed **ventilated carbon-ceramic discs system** by Brembo
- Cooling with highly energized air flow for the discs, calipers and pads, so as to allow **repeatability of braking for an extended period of time**
- Diameter **410 x 38 mm** with 6-piston monolithic caliper at the front
- Diameter **390 x 34 mm** with 4-piston monolithic caliper at the rear
- Combined with the **latest generation ESP 9.3 system** developed with Bosch





Wheels and Tires

MADE TO MEASURE

09

Wheels and Tires

MADE TO MEASURE

- APP Tech **monolithic rims** made from forged aluminum alloy, with dimensions **21" on the front and 22" on the rear**
- Unique dimensions, which triggered a **distinguishing design freedom on the surrounding bodywork**
- **Exclusive tires** developed with Pirelli, through state of the art simulation and construction processes to transfer the exuberant torque output to the ground efficiently
- **Pirelli PZero Corsa** 265/35 R21 on the front and 325/30 R22 on the rear, to offer the comfort of a driving on the road and a balanced grip for high performance conditions at the same time
- **Pirelli SottoZero** 265/35 R21 on the front and 325/30 R22 on the rear for driving in winter conditions





Interior

10

A RESEARCH OF SENSORY AUTHENTICITY

Interior

A RESEARCH OF SENSORY AUTHENTICITY

- **Meticulousness of details inversely proportional to the size of the elements**; large simple pieces, small pieces full of refinements to be discovered over time
- **A philosophy that goes against the main trends of the time**, there are no digital screens apart from the minimal display in front of the driver
- **Instruments purely analog** and each of the easy-to-read dials subtly reveals part of its mechanism as if it were revealing the skeleton movement
- **Steering wheel machined from a single block of aluminum**: simplification and reduction of components, with a display of construction technologies and uniqueness
- **References to technical and aesthetic solutions of the '50s and '60s**, both from the world of leather goods and horology
- **Integration of a luminous aura** that creates a pleasant and relaxing environment, while at the same time, emphasizes the components as works of art



PAGANI

Utopia



PAGANI